



**Consulting &
Construction**
Integrated Solutions for the AEC Industry



WE BOOST THE
TRANSFORMATION
TO **CONSTRUCTION 4.0**



WE BOOST THE TRANSFORMATION TO CONSTRUCTION 4.0

At **C&C Consulting Construction Group**, we have been committed to providing you with the best service and quality for your project for over 20 years. To achieve this, we have been implementing Digital Technology for more than a decade, utilizing Virtual Design and Construction (VDC) Models under the **BIM** approach, **Extended Reality**, and **Reality Capture** throughout the entire project lifecycle, adapting to your specific needs.

Today, **Construction Project Management**, driven by technological advancements in recent years, must take a new path that leverages the vast benefits of **Construction 4.0**, strengthening the traditional Management approach. To this end, we follow **PMI® recommendations for Project Management** and utilize **Construction Information Models**, integrating them with **Planning and Time & Cost Control Platforms**, as well as **Enterprise Resource Planning (ERP) Systems**.

By integrating **BIM Models with Management Software** and properly handling data within a **cloud-based common data environment**, we ensure **complete and timely information**, allowing us to develop **Descriptive and Prescriptive Data Analytics Models** that enable informed decision-making.

It is crucial for the **AEC industry** to learn from the successful experiences of other industries and adapt them to construction processes. For this reason, we implement **Lean Construction** as a work philosophy—an **optimized adaptation of Lean Manufacturing**, which originated in the automotive industry a couple of decades ago. **Lean Planning and Control Systems**, such as the **Last Planner System®** and **Takt Time Planning**, working alongside **BIM Models**, provide today's managers with an excellent combination to ensure project success.



Julián Alberto Toro Arzayús
Ms. Eng, CM-BIM, CM-LEAN
CEO - C&C Consulting Construction Group

CONTENTS

WHO WE ARE? 4

Our History	5
Strategic Direction	7
Our Divisions	8
Our Talen	9
Our Infrastructure	10
Recognitions	11
Our Clients	12
Where We Are Located?	14

SERVICE PORTFOLIO 15

Project Management	16
AEC Design	21
BIM-VDC	26
AEC Technology	30
Ingestructuras	37
Lean Construction	40
AEC Software	43
AEC Institute	53

PROJECT PORTFOLIO 68

Commercial Sector Projects	69
Residential and Hospitality Sector Projects	89
Mixed-Use Sector Projects	117
Infrastructure and Transportation Sector Projects	123
Educational and Institutional Sector Projects	132
Healthcare Sector Projects	146
Sports and Cultural Sector Projects	150
Industrial Sector Projects	158

CITI AEC CONGRESS 186



**Consulting &
Construction**
Integrated Solutions for the AEC Industry



WHO WE ARE?



OUR HISTORY

C&C Consulting Construction Group® originated from Ingestructuras Colombia, a company founded in 2002 in Cali, Colombia. Initially, the company's concept was to participate in Structural Engineering Projects in Design and Consulting. However, the experience gained in project execution, particularly in Construction with Steel Structures, marked a turning point in the company's strategic direction.

In 2010, aligned with the corporate vision of establishing itself as a highly competitive business capable of tackling the challenges of globalization, the company took on the challenge of crossing borders and expanding, leading to the foundation of Ingestructuras México in the Guadalajara Metropolitan Area.

Over the years, thanks to our experience in executing large-scale projects within the AEC Industry and our customer-focused organizational culture, new opportunities arose. These allowed us to offer our internal services as a comprehensive solution for our clients.

Thus, during 2013 and 2014, the idea of forming a Business Group took shape, enabling us to offer a comprehensive service portfolio through Specialized Divisions.

Today, C&C Consulting Construction Group, looking toward the future, continues its expansion and growth with the opening of its Miami office in 2022 and its London office in 2024.

• 2002 •



C&C Consulting Construction Group® was born in Cali as Ingeestructuras Colombia®, specialized in projects involving metal structures.



• 2013 •



Experience in AEC (Architecture, Engineering, and Construction). In 2013-2014, a Business Group was created with Specialized Divisions for comprehensive solutions and customer satisfaction.



• 2010 •



Ingeestructuras México® was established in Guadalajara to expand the company and address global challenges.



• 2022 •



C&C Consulting Construction Group is moving towards the future with expansion and growth, highlighted by the opening of its office in Miami.





STRATEGIC DIRECTION

Mission

At C&C Consulting Construction Group, our mission is to provide comprehensive and customized solutions in Design, Construction, Consulting, and Project Management to drive projects within the AEC Industry (Architecture, Engineering, and Construction). We strive to achieve a positive environmental impact, ensure complete client satisfaction, and foster the continuous and sustainable growth of our organization over time.

Vision

By 2028, our goal is to position ourselves as the leading benchmark in Ibero-America for the adoption of Technology and Innovation in Design, Construction, and Project Management within the AEC Industry. We are committed to standing out for our excellence and leadership in incorporating cutting-edge technological solutions into our services.

Integrated Management Policy

The Integrated Management Policy of C&C Consulting Construction Group focuses on quality, industrial safety, and environmental responsibility, strictly complying with applicable laws and regulations. We are committed to:

- Ensuring client satisfaction and fulfilling commitments, continuously improving processes through the optimal use of resources, advanced technology, and a highly competent team, fostering the company's growth.
- Protecting the health and safety of our employees, ensuring their physical, mental, and social well-being, and proactively managing occupational risks.
- Minimizing the environmental impact of our activities by promoting sustainable practices, such as clean production, efficient waste management, and environmental awareness among our staff.

OUR DIVISIONS



C&C Project Management
Efficient Construction Management



AEC Design
Efficient Creations



C&C BIM-VDC
Managed Information for
Virtual Construction



AEC Technology
Construction Beyond Technology



AEC Software
Architecture, Engineering &
Construction Software



AEC Institute
Architecture, Engineering &
Construction Education



C&C Lean Construction
Adding Value for AEC Industry



Ingestructuras
Concrete, Steele & Tensile Structures

OUR TALENT

At C&C Consulting Construction Group, we recognize that our most valuable asset is Human Talent. Our multidisciplinary team, composed of architects, engineers, graphic designers, administrators, and other professionals, brings a balanced combination of experience and creativity, enriched by diverse backgrounds and skills.

Understanding the importance of human capital development, we promote continuous training for our staff, tailored to their areas of interest.

In our organization, we ensure gender equity, eliminate barriers based on origin or social status, respect diverse ideologies, and foster inclusive leadership.



OUR INFRASTRUCTURE

Our facilities provide a modern physical infrastructure, supported by high-performance hardware and top-tier software tailored to meet the needs of your project. We have the capability to replicate our central office infrastructure on-site, giving you access to the best tools available.

In field operations, we utilize traditional and robotic surveying equipment, as well as Reality Capture technologies (Laser Scanners, Photo/Video Scanners, Drones, 360 Cameras) and Extended Reality solutions (VR, AR, MR), among other cutting-edge resources.



RECOGNITIONS



EXITO BUSINESS AWARDS
Latin Business Organization (2007).



LATIN AMERICAN QUALITY AWARDS
Latin American Quality Institute (2008).



PREMIO CALIDAD SUDAMERICANA
Associação Brasileira de Incentivo à
Qualidade (2008).



OBRAS CEMEX AWARD
Third Place – CEMEX Colombia (2012)).



CMIC EMPRENDE AWARD
First Place – CMIC (2015).



WALMART AWARDS
Recognition for Outstanding Performance
and Leadership in Safety and Hygiene (2022).

OUR CLIENTS

We serve public and private institutions, industrial and commercial companies, as well as individual clients with construction or project adaptation needs. Our focus is on entities where Engineering and Architecture play a crucial role, such as industrial construction firms, architectural and engineering offices, and real estate developers.

COMMERCIAL SECTOR



MIXED-USE



RESIDENTIAL SECTOR



INFRASTRUCTURE & TRANSPORTATION SECTOR



HEALTHCARE SECTOR



INDUSTRIAL & MANUFACTURING SECTOR



EDUCATION SECTOR



SPORTS & CULTURAL SECTOR



HOSPITALITY SECTOR



CONSTRUCTION SECTOR



WHERE ARE WE?



Head Office

Guadalajara, Jalisco.
México.

Commercial Office

Miami, Florida.
United States

Commercial Office

Kennedy House.
United Kingdom.

Projects

MÉXICO

Ciudad de México
Guadalajara, Jal.
Monterrey, NL.
San Luis Potosí, SLP.
Colima, Col.
Durango, Dur.
Veracruz, Ver.
Puebla, Pue.
Tijuana, BCN.
Ciudad del Carmen, Cam.
Ciudad Obregón, Son.
León, Gua.
Morelia, Mic.
Manzanillo, Col.
Vallarta, Jal.
El Marqués, Qro.

COLOMBIA

Bogotá D.C
Cali
Popayán

UNITED KINGDOM

Londres

GUATEMALA

Ciudad de Guatemala

PANAMÁ

Ciudad de Panamá

COSTA RICA

San José

UNITED STATES

Miami
Atlanta





SERVICE PORTFOLIO

Project Management: Comprehensive Project Management with Innovation and Precision

The C&C Project Management division specializes in providing outsourcing and consulting services for critical processes, such as Time, Cost, and Quality Management, across all project phases. We meticulously address aspects related to Design, Preconstruction, Construction, and Operation, with an unwavering commitment to ensuring the absolute success of your project through comprehensive and professional management.



**CONSULTING
IN PROJECT
MANAGEMENT**



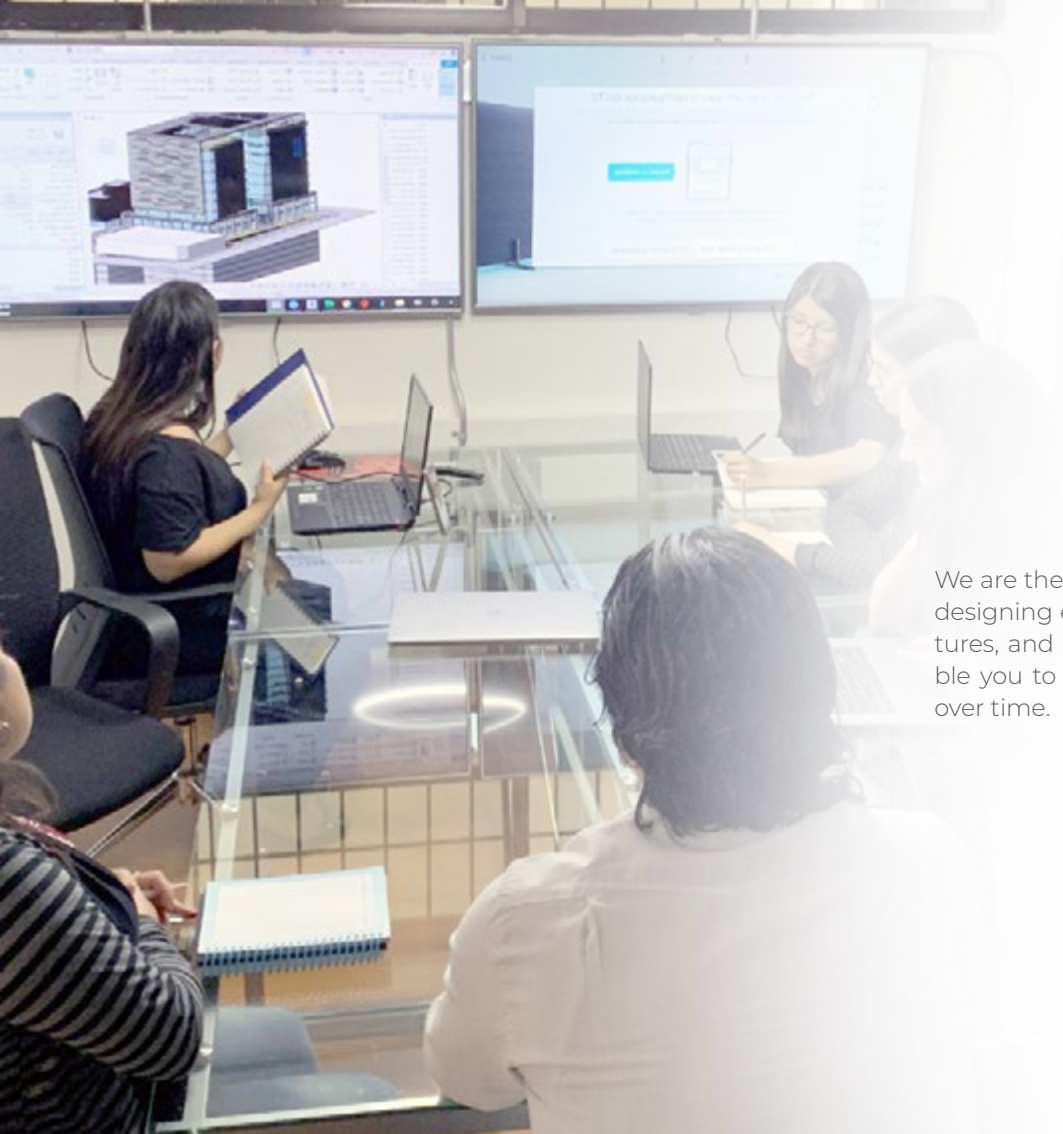
**CONSTRUCTION
PROJECT
MANAGEMENT**



HSE SUPERVISION



**CONSTRUCTION
SUPERVISION**



PROJECT MANAGEMENT CONSULTING

We are the ideal strategic partner for your organization, designing efficient processes, defining adequate structures, and implementing technological tools that enable you to grow solidly, systematically, and sustainably over time.



CONSTRUCTION PROJECT MANAGEMENT

We provide Administrative and Technical Support Services designed to ensure that your construction projects are completed on time, within budget, and in accordance with the planned specifications and scope.





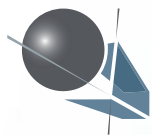
CONSTRUCTION SUPERVISION

We understand that construction activities must be accompanied by strict Monitoring and Control to ensure compliance with Specifications, Current Regulations, and Industry Best Practices.



HSE SUPERVISION

Our Occupational Health, Industrial Safety, and Environmental Supervision service is designed to ensure that your projects comply with the highest standards and current legal regulations, providing a safe and healthy environment.



AEC Design

Efficient Creations

FROM VISION TO CONSTRUCTION

AEC Design: Experts in Comprehensive Design for Architectural, MEP, and Structural Projects

AEC Design, our specialized Architecture and Engineering division, leads the comprehensive development of projects, from Conceptual Design to Executive Design. Our highly qualified team of architects and engineers, supported by continuous training and cutting-edge technologies such as BIM, ensures the success of every project.

Additionally, we closely collaborate with strategic partners specialized in various areas of the AEC Industry, guaranteeing tailored solutions that meet the specific needs of each project.



**STRUCTURAL
DESIGN**



**ARCHITECTURAL
DESIGN**



MEP DESIGN



**AEC DESIGN
CONSULTING**



STRUCTURAL DESIGN

We specialize in Structural Design for Concrete Structures, Steel Structures, and Tensile Structures.

By working with AEC Design, you gain access to highly trained and experienced professionals, ensuring the success of your project.

Our designs comply with modern design and construction standards set by prestigious institutions such as the American Concrete Institute (ACI) and the American Institute of Steel Construction (AISC), while also adhering to local building codes and regulations.

We utilize advanced tools for structural analysis and design, based on the Finite Element Method (FEM), enabling us to assess any type of structure or structural component. For modeling, we leverage specialized BIM software to enhance accuracy and reduce process times.



ARCHITECTURAL DESIGN

AEC Design recognizes the importance of providing a comprehensive service and stands out for its commitment to Architectural Design. This service is tailored to the specific needs of each client, considering the type of consultancy required and the project's development stage. Our flexible approach adds value at every stage, ensuring effective decision-making that leads to a significant reduction in time and cost losses associated with design errors.

Our team-oriented mindset and expertise in Architectural Design Coordination—integrating technical studies and designs from various disciplines—are key elements in ensuring the success of a project. AEC Design supports the development of projects ranging from Urban Planning and Infrastructure to Industrial, Commercial, Institutional, Sports, and Residential Buildings.





MEP SYSTEMS ENGINEERING

AEC Design offers MEP Systems Design Services (Mechanical, Electrical, and Plumbing), ensuring that all projects comply with current International and Local Standards for the design of:

- HVAC Systems
- Hydrosanitary and Stormwater Systems
- Fire Protection Networks
- Electrical Installations
- Special Systems (Voice, Data, and CCTV)

All our engineering solutions are developed using the BIM approach, ensuring proper design coordination to prevent construction issues. Additionally, we offer certified expertise not only in Design but also in Construction, guaranteeing fully buildable designs that optimize your investment and resources.

Our design team consists of Architects, Engineers, and Specialized Partner Firms, providing professionalism and experience to ensure the successful development of your project.



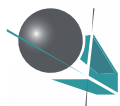
AEC DESIGN CONSULTING

Discover the excellence of our comprehensive consulting service at AEC Design, where we specialize in Architecture and Engineering. From Conceptual Design to the Executive Phase, our highly qualified team is dedicated to ensuring the success of every project. The integration of advanced technologies like BIM not only highlights our cutting-edge approach but also ensures precise planning and execution.

Beyond our in-house expertise, we take pride in closely collaborating with strategic partners. This partnership ensures that every proposed solution is tailored to your project's specific needs. At AEC Design, we offer more than just expertise and advanced technology—we provide a strong network of strategic partnerships that enhance and strengthen every stage of your project.

With us, you gain more than consulting—you secure a solid partnership for the successful realization of your architectural and engineering goals.





C&C BIM-VDC

Managed Information for
Virtual Construction

Consulting and Services with **Digital Twins** for Your Projects

C&C Consulting Construction Group, committed to providing comprehensive solutions, has developed the C&C BIMVDC Division to give you access to BIM (Building Information Modeling) for Virtual Design and Construction in your project. This division specializes in BIM Outsourcing and Coordination Services across all disciplines: Architecture, Structure, and MEP Engineering.

Whether you are an Owner, Designer, Builder, Manager, or Operator, we share the same goal: delivering high-quality projects on time and within budget—and BIM is the right tool to achieve



**BIM CONSULTING
IMPLEMENTATION**



**BIM
OUTSOURCING**

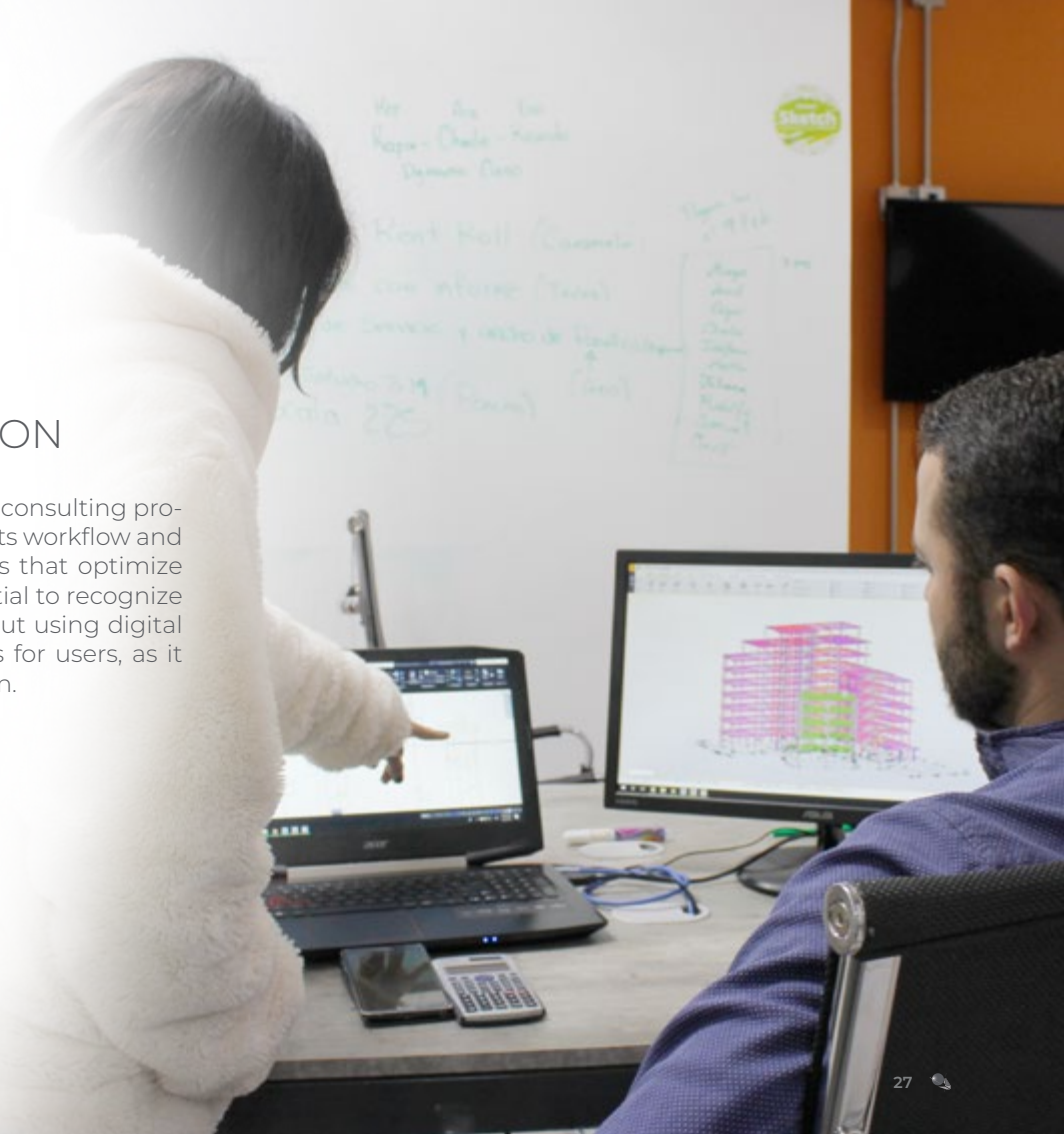


**BIM
COORDINATION**



BIM IMPLEMENTATION

We understand BIM Implementation as the consulting process through which an organization adapts its workflow and production resources to integrate new tools that optimize performance and process quality. It is essential to recognize that BIM implementation is not merely about using digital tools—it is a complex and dynamic process for users, as it entails a cultural shift within the organization.

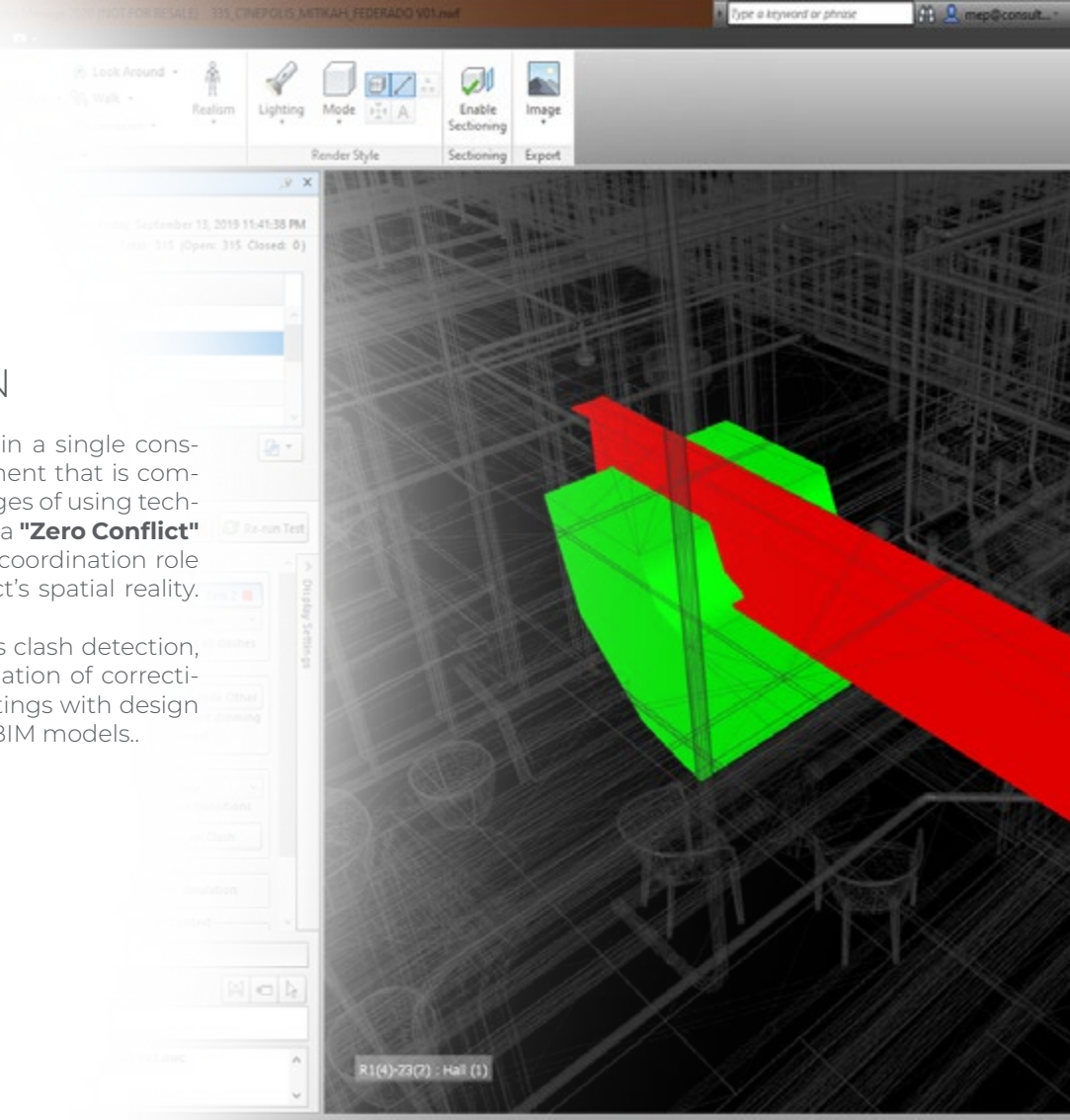




BIM DESIGN COORDINATION

The interaction of various disciplines within a single construction project creates a spatial environment that is complex to visualize. One of the major advantages of using technology in the AEC industry is the pursuit of a **"Zero Conflict"** status, and **C&C BIM-VDC** plays a central coordination role by involving the entire team in the project's spatial reality.

To achieve this, **BIM Coordination** involves clash detection, report generation, presentation and evaluation of corrective actions, execution of coordination meetings with design and construction teams, and updating of BIM models.





BIM OUTSOURCING

During this process, we create a single three-dimensional model – BIM-3D – that digitally represents the entire construction project. All project information is integrated into this model, including terrain, structures, walls, partitions, carpentry, installations, furniture, and more.

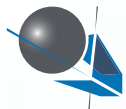
With BIM, you can also develop a project schedule model to track and manage construction progress, as well as perform on-site logistics analysis using constructability models – BIM-4D.

One of the key objectives of constructability models is material extraction, allowing us to generate a reliable budget with accurate data and effectively track the Physical-Financial Progress throughout the construction phase – BIM-5D.

BIM also enables thermal performance analysis, energy efficiency evaluation, system analysis, CO₂ production assessment, wind and solar studies, among others. This allows for performance and sustainability evaluation – BIM-6D.

As an owner, operator, or facility manager, BIM provides “As-Built” information, consolidating all relevant data to facilitate building operation and maintenance – BIM-7D.





AEC Technology

Construction Beyond Technology

Services for the AEC Industry with Advanced Technologies

At C&C Consulting Construction Group, we understand the importance of ensuring the success of your projects by connecting the field with the office, utilizing cutting-edge technology and highly skilled professionals.

AEC Technology is our innovation division, providing solutions where Technology and Construction converge to deliver high-quality services from start to finish through the use of state-of-the-art hardware and software.



REALITY
CAPTURE



DIGITAL
MODELS &
DOCUMENTATION



EXTENDED
REALITY



FIELD
TECHNOLOGY



DATA
SCIENCE



REALITY CAPTURE

Reality Capture is a process that collects precise data from a physical environment by combining measurements and imagery using Construction 4.0 technologies such as 3D Laser Scanning and Digital Photography. This enables the acquisition of highly reliable information on existing site conditions for purposes such as design, monitoring and control, maintenance, and more

3D LASER SCANNING

3D Laser Scanning is a process that captures highly accurate, three-dimensional data of an object or physical space, creating a digital representation using Light Detection and Ranging (LiDAR) technology. The result is a high-resolution 3D map, known as a Point Cloud, which provides valuable information for planning, design, construction, and operation processes in our projects.

Terrestrial Laser Scanning (TLS): High-resolution precise data capture of complex structures, both indoors and outdoors.

Aerial Laser Scanning – ALS: Rapid and precise mapping of large areas, ideal for topography and urban planning.



DIGITAL PHOTOGRAPHY

Digital Photography involves capturing images using digital cameras, which allow us to realistically and unequivocally capture, record, and communicate the conditions of our environment. At AEC Technology, we offer digital photography services, focusing on Aerial Photography, Digital Photogrammetry, and 360° Photography.

- **Aerial Photography:** The use of drones in construction goes beyond capturing shots from previously inaccessible locations.

- **FDigital Photogrammetry:** This technique aims to accurately study and define the shape, dimensions, and spatial position of an object, primarily using measurements taken from photographs.

- **360° Photography:** An advanced technical solution for documenting in detail and immersively the current state of an environment. Using a 360 camera and a digital platform, it captures and stores information about every space and component of the site, providing visual information ideal for presentations, remote inspections, and marketing.





EXTENDED REALITY FOR CONSTRUCTION

We offer Extended Reality (XR) services that combine real and virtual environments, encompassing Augmented Reality (AR), Virtual Reality (VR), and Mixed Reality (MR). These technologies enhance the planning, design, execution, and operation of your projects by providing immersive and enriched experiences.

Augmented Reality (AR): We use AR to overlay digital information onto the physical environment, allowing projects to be visualized in their real context and enhancing the decision-making process.

Virtual Reality (VR): We offer immersive VR experiences to explore and evaluate projects in a digital environment, useful for presentations, training, and design review.

Mixed Reality (MR): We use MR to combine virtual elements with the real world, creating an interactive and collaborative environment that enhances accuracy and efficiency in projects.



FIELD TECHNOLOGY

AEC Technology offers Field Technology solutions for your projects. These solutions unlock the potential of constructability by maximizing the use of information during all phases of construction, improving aspects such as accuracy, quality, and the management of time and cost in your projects.

Robotic Layout: Our Robotic Layout solution is specifically designed for precise positioning tasks on the construction site.

Monitoring and Construction Progress Control: We implement systems to ensure schedule and budget compliance during the execution of construction tasks.

Quality Assurance and Quality Control (QA/QC): We ensure high-quality standards at every stage of execution, correcting deviations in real-time.





DIGITAL MODELS AND DOCUMENTATION

Digitalization in the AEC Industry facilitates collaborative management among all agents in the value chain. This advantage applies not only to new projects, where digitalization can be developed from early stages, such as planning or design.

At AEC Technology, we have developed the service of creating Digital Models and Documentation of any existing space, based on capturing its current conditions. This service facilitates the digitalization of all components with a focus on Geographic Information Systems (GIS), Building Information Modeling (BIM), and/or Computer-Aided Design (CAD), according to your needs.



DIGITAL MODELS AND DOCUMENTATION

GIS - Geographic Information Systems

We use Geographic Information Systems (GIS) to manage geospatial data, which is crucial for urban planning, infrastructure, and environmental analysis, among others.

BIM - Building Information Modeling:

We create 3D models that integrate all the information of existing buildings (Scan-to-BIM), commonly used as an information tool for facility management (BIM-to-FM).

CAD - Computer-Aided Design:

We use advanced technology to create precise and detailed drawings and plans, facilitating the visualization and documentation of the existing conditions of a property.



At AEC Technology, data science is the fundamental pillar for optimizing project management in the construction industry. We centralize and analyze large volumes of data to convert it into actionable information, improving decision-making and operational efficiency.

Our approach is based on using a Common Data Environment (CDE) to facilitate real-time collaboration and applying advanced analytics to identify key patterns and trends. This enables us to maximize performance and reduce costs at all stages of the project, ensuring thorough control and superior results.



DATA SCIENCE

CDE - Common Data Environment

Is a centralized platform that facilitates the management, access, and real-time exchange of information throughout the entire lifecycle of a project in the AEC industry. Designed to optimize collaboration among multidisciplinary teams, the CDE ensures that all stakeholders work with updated data, reducing errors, improving efficiency, and ensuring comprehensive control of each project phase.

Data Analytics:

Data analytics is revolutionizing the AEC industry by transforming large volumes of data into strategic information. It enables informed decisions, optimizes resources, identifies risks, and improves efficiency, becoming a key tool to drive competitiveness, reduce costs, and ensure sustainability.



Ingestructuras

Concrete, Steele & Tensile Structures

SHAPING YOUR VISIONS:

Expert Design and
Manufacturing of Metal
Structures and Tensile
Structures.

At Ingestructuras®, we provide solutions within the professional services of Design, Manufacturing, and Assembly of Metal Structures and Tensile Structures. We have an extensive portfolio of projects that demonstrate our experience, dedication, and professionalism, which we make available for your project.



STEEL
STRUCTURES



TENSILE
STRUCTURES



STEEL STRUCTURES

Steel Structures allow for the construction of strong and lightweight buildings, due to the high strength of the material per unit of mass, meaning the weight is significantly lower compared to other construction materials. This is particularly important for designing large-span elements and for cost-efficiency in foundation construction.

Another competitive advantage of building with steel is its uniformity and durability. The properties of steel do not appreciably change over time, unlike other construction materials. If steel structures are properly maintained, they can last indefinitely.



TENSILE STRUCTURES

We specialize in the Design and Construction of Tensile Structures. The benefits of these structures, thanks to the properties of their materials, include their geometry and form, which allow for the creation of innovative and cutting-edge concepts, thanks to their lightness and plasticity. Ingestructuras® has specialized in the construction of non-conventional metal structures with tensioned membranes, for application in all types of projects such as canopies, roofs, and facades.





It is the consulting division of C&C Consulting Construction Group, responsible for providing Lean Process Implementation services within your organization or for a specific project.

The development of these processes strengthens planning and execution, fostering a mindset shift towards teamwork and continuous improvement, which is essential to ensure time and cost savings, while also increasing the quality of constructions.



**LEAN CONSTRUCTION
CONSULTING**



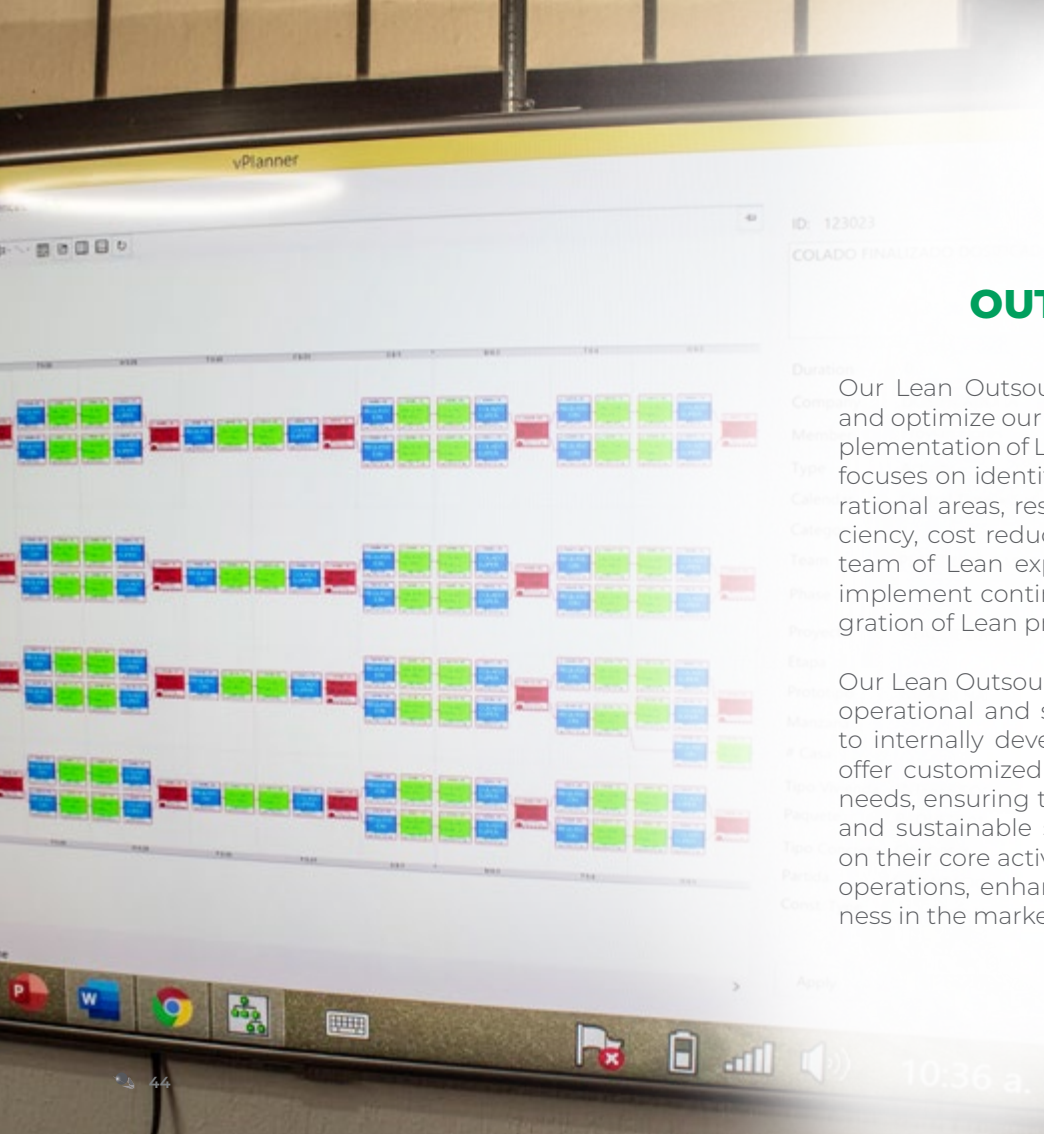
**LEAN CONSTRUCTION
OUTSOURCING**



BUSINESS CONSULTING

At C&C Lean Construction, we focus on implementing the Lean Construction philosophy, aiming to maximize value for the client through the optimization of design, planning, and execution. This philosophy is the cornerstone of our business consulting services, where we apply Lean tools to define processes and workflows that drive Continuous Improvement and efficiency. We use advanced methods such as the Last Planner System and Takt Time Planning, which are essential in our consulting to improve planning and monitoring, thus minimizing uncertainties and enhancing project management effectiveness.

Furthermore, at C&C Lean Construction, we develop Lean Supply Chains and Assembly, integrating these strategies into our consulting to increase efficiency and commitment to business projects. We actively promote Integrated Project Delivery (IPD), a collaborative approach that integrates people, systems, and companies, optimizing project outcomes and improving value for the owner. Our focus on Lean Construction and IPD in consulting ensures that companies adopt effective and modern strategies for managing and executing their projects, reflecting a commitment to innovation and excellence in the industry.



OUTSOURCING LEAN

ID: 123023

COLADO FINALIZADO PROYECTO

Duration

Comp

Man

Type

Categ

Categ

Team

Phase

Prog

Equip

Post

Man

Cas

Type

Part

Type

Part

Cond

Apply

Our Lean Outsourcing service is designed to revolutionize and optimize our clients' business processes through the implementation of Lean strategies and principles. This approach focuses on identifying and eliminating waste across all operational areas, resulting in significant improvements in efficiency, cost reduction, and increased productivity. With our team of Lean experts, we analyze and redesign processes, implement continuous improvements, and ensure the integration of Lean practices into the organizational culture.

Our Lean Outsourcing service is ideal for companies seeking operational and strategic transformation without the need to internally develop expertise in Lean methodologies. We offer customized solutions tailored to each client's specific needs, ensuring that business objectives align with efficient and sustainable strategies. This way, companies can focus on their core activities while we take care of optimizing their operations, enhancing their performance and competitiveness in the market.



AEC Software

Architecture, Engineering &
Construction Software

We develop your **Digital Ecosystem** with **Tools** for the **AEC Industry**

AEC Software is the division of **C&C Consulting Construction Group** focused on the distribution of software solutions for the Architecture, Engineering, and Construction (AEC) industry. We guarantee the best technological solution based on your company's needs, workforce, workflows, and area of expertise. Our consulting approach to selecting the best tools is objective, comprehensive, and flexible, built upon our own experience as users of various solutions.



**SOFTWARE FOR
ARCHITECTURE**



**SOFTWARE FOR CIVIL
ENGINEERING**



**SOFTWARE FOR MEP
ENGINEERING**



**SOFTWARE
FOR PROJECT
MANAGEMENT**



**SOFTWARE FOR
DATA ANALYTICS**



**INTEGRATION &
DEVELOPMENT**



We are partners of global leaders in software development and maintain strategic alliances with major wholesalers and distributors. We have the capability to implement and integrate solutions for Architecture, Civil Engineering, MEP Engineering, Project Management, and Data Analytics, making us the best choice to lead your company's Digital Transformation in the AEC industry.

Bentley®

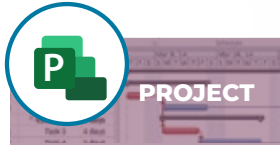
AUTODESK

RIB | Presto

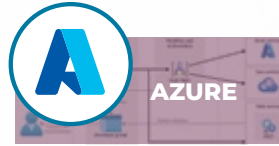
Microsoft

monday

Oculo



Microsoft Project is a project management application that helps plan, schedule, allocate resources, and track tasks in detail.



Azure is a cloud services platform offering computing, storage, analytics, and artificial intelligence to manage business applications and services.



Power BI is a business intelligence platform for data analysis and visualization, allowing organizations to turn data into interactive, easily understandable visual insights.



Microsoft Dynamics 365 is a business management software suite that includes CRM and ERP applications to help companies optimize their operations.





Monday Work Management is a project and collaborative work management platform that allows teams to organize, plan, and track tasks in real time.

Monday CRM is a customer relationship management platform that enables businesses to organize, manage, and monitor their interactions and business processes.



Oculo is a construction monitoring and management software that uses image capture, 360° video, and artificial intelligence to visually track project progress in real time.



Autodesk AEC Collection

AEC Collection is a specialized suite for the AEC industry that provides integrated tools for designers and builders to create, explore, and build with confidence.



Autodesk Revit

Revit enables construction professionals to model, plan, and manage BIM projects in a collaborative environment.



Autodesk InfraWorks

InfraWorks is a 3D infrastructure design software that allows users to model, visualize, and analyze projects in a geospatial context.



Autodesk Navisworks

Navisworks is a tool for coordinating 3D projects, detecting clashes, and simulating 4D construction to enhance project management.



Autodesk Construction Cloud

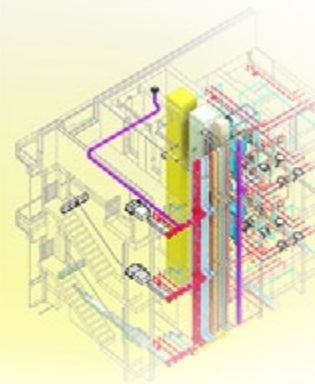
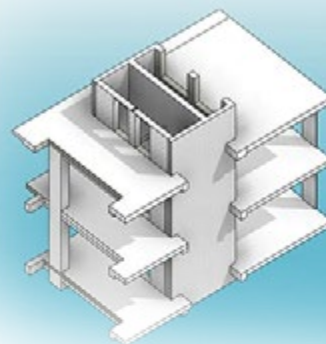
ACC is a construction management platform that integrates essential tools to improve collaboration and project efficiency.

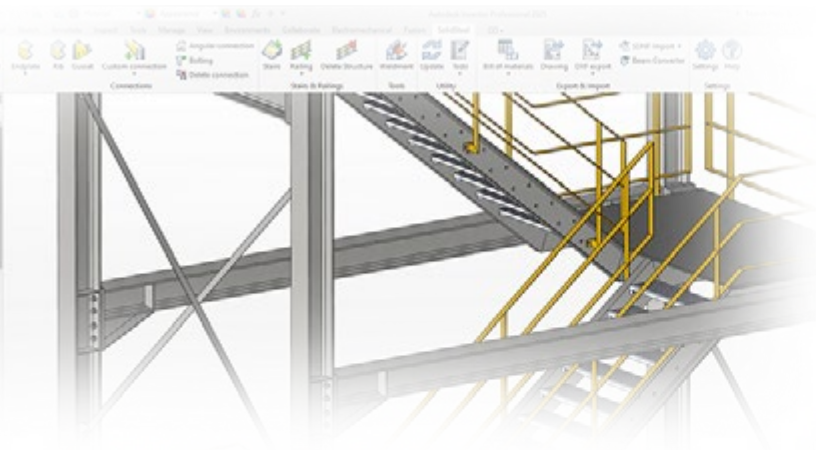


Autodesk DOCS

Docs is a cloud-based platform for managing and sharing construction project documents, enhancing collaboration and efficiency.

AUTODESK





**Autodesk
Civil 3D**

Civil 3D is a civil engineering design software that supports modeling, analysis, and documentation of infrastructure projects.



**Autodesk
AutoCAD**

AutoCAD is a computer-aided design (CAD) software for creating 2D and 3D drawings, enhancing collaboration and productivity in architecture and engineering.



**Autodesk
BIM
Collaborate
Pro**

BIM Collaborate Pro is a cloud platform for managing BIM construction projects, enabling real-time collaboration and reducing errors.



**Autodesk
Build**

Build is a construction management platform that integrates tools for planning, coordinating, and executing projects in the construction sector.



**Autodesk
ReCap Pro**

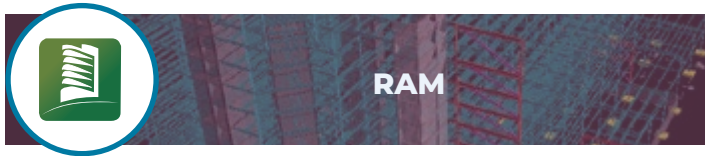
ReCap Pro captures and processes 3D data from scans and photos, creating accurate digital models for project planning and documentation.



**Autodesk
3ds Max**

3ds Max is a 3D software for modeling, animation, and rendering, widely used in design, architecture, and gaming, ideal for visualizations and visual effects.

Bentley®



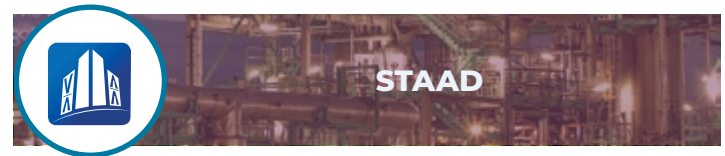
RAM Elements is a structural analysis and design software that provides efficient and accurate solutions for the design of buildings and bridges.

RAM SBeam is a steel beam design and analysis software that simplifies the creation of strong structures in construction projects.

RAM Connection is a structural design and analysis tool that streamlines steel structure connections, ensuring safety and efficiency in construction.

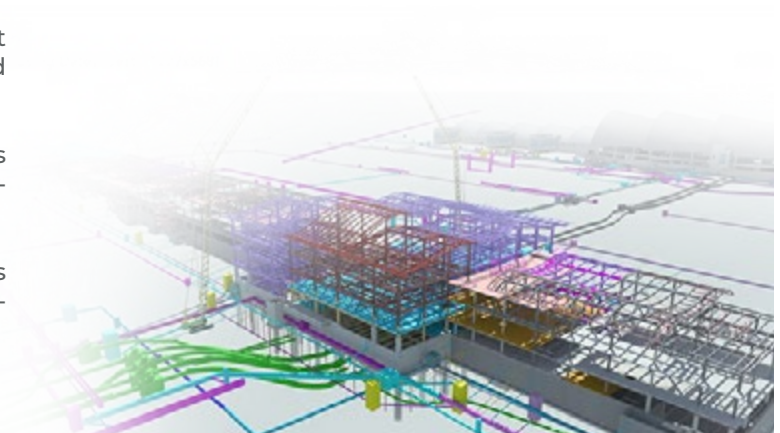
RAM Concept is a slab and foundation design and analysis solution that enables project optimization in terms of performance and cost.

RAM Structural System is a structural design and analysis software that facilitates the creation of safe and cost-efficient construction projects.



STAAD.Pro is a structural analysis and design software used in civil engineering and architecture to evaluate the integrity and efficiency of complex 3D structures.

STAAD Foundation is a foundation design and analysis tool that helps engineers create safe and efficient foundations for various types of structures.



Bentley®



Structural WorkSuite: Bentley Systems offers a tool that streamlines early-stage design, enabling professionals to create high-quality, cost-effective designs using various materials and international standards, while reducing reliance on multiple software programs.



Synchro 4D adds a time dimension to 3D visualization, enabling precise scheduling and simulation of construction projects.

Synchro Cost is a solution that enables cost management in construction projects by integrating financial data with 4D models.

Synchro Control is a construction project management platform that provides real-time visibility and control over costs, resources, and scheduling.

Synchro Field is a mobile application that allows real-time task management, enhancing communication and efficiency on the job site.



CAD Drawing Interpretation: Automatic measurement of drawings from AutoCAD and other programs in DWG format.



Project Management: Certifications and execution tracking for the site manager or project manager. Change management. Bid comparison.





Presto



BIM

Cost-it: Revit plug-in for generating quantity takeoffs and interacting with the 3D BIM model.

Presto IFC: Extraction of quantity takeoffs from an IFC file and modification of the model.



PLANNING

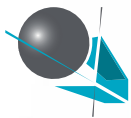
Custom Report Generation: Analysis of cost and sale prices. Economic planning by certifications and work units. Resource calculation. Cash flow. Bar chart and time-space diagram.



COMPLEMENTS

Server: Installation on a user-provided server, allowing simultaneous multi-user read and write access to all projects in the same location, in client-server mode.

		Código	Nat.	le	Resumen	CarPres_Ud	Pres	ImpPres
10/1	+ 9	E04			CIMENTACIONES	1	\$2.723,68	\$2.723,68
11/1	+ 10	E05			ESTRUCTURAS	1	480.875,76	480.875,76
12/1	+ 11	E07			CERRAMIENTOS Y DIVISIONES	1	1.132.431,80	1.132.431,80
13/2	+ 11.1	E078AT010			FÁBRICA BLOQUE TERMOMBRICK CERANOR 30x19x14 cm	782,53 m2	16,50	14.476,81
14/2	+ 11.2	E078HB010			FÁBRICA BLOQUE HORMIGÓN LISO BLANCO CARA VISTA 40x10x20 cm	168,75 m2	42,07	7.099,31
15/2	+ 11.3	E07CC010			MURO CORTINA ALUMINIO Y VIDRIO 6/12/6 (F 16.1)	2.453,66 m2	383,01	939.776,32
16/2	+ 11.4	E07CC020			MURO CORTINA VENTILADO ALUMINIO Y VIDRIO 6/42/6 (F 16.2)	129,99 m2	582,46	75.713,99



AEC Institute

Architecture, Engineering &
Construction Education

Training for the AEC Industry: Boost Your Team's and Company's Productivity

AEC Institute is the academic division of **C&C Consulting Construction Group**, with a mission to promote education within the Architecture, Engineering, and Construction industry—especially in areas of Technology and Innovation. We currently offer the best **BIM** Training and Certification solutions, backed by our extensive professional experience and our status as an authorized training center for the industry's leading software developers.



CERTIFICACIONES



CAPACITACIONES



AEC Institute offers **corporate training services, promoting educational strategies within organizations** to help team members acquire the skills and knowledge needed to apply them in their work, innovate, and perform their roles more effectively.

Our training programs are typically accompanied by business consulting in **Construction Project Management** with a focus on **Digital Transformation**, aligning organizational processes with the technical skills that should be fostered among personnel.

RIB Trainings



AEC Institute Offers specialized training for Presto, RIB software focused on Cost, Time, and Execution Management for construction projects. Our course offerings include:

- **Estimates and Quantity Takeoff Course**
- **Project Planning and Scheduling Course**
- **Project Execution and Control Course**
- **BIM Integration Course (Cost-it & IFC)**
- **Contracting and Procurement Course**
- **Custom Report Generation Course**





Autodesk Training



Authorized Training Centers are part of the ALP community (Autodesk Learning Partner), Autodesk's official training partner network. **AEC Institute** holds these credentials, ensuring the quality of our training services in Autodesk solutions.

As an Authorized Training Center (ATC), we provide high-quality learning experiences to our students. Our training courses help enhance knowledge of Autodesk products, prepare for certification exams, and achieve professional goals. Below are some of our courses:

Autodesk Training



Revit

Professional training in **Revit** will provide you with the tools and skills needed to develop architectural, structural, and MEP engineering projects.



Revit + vray

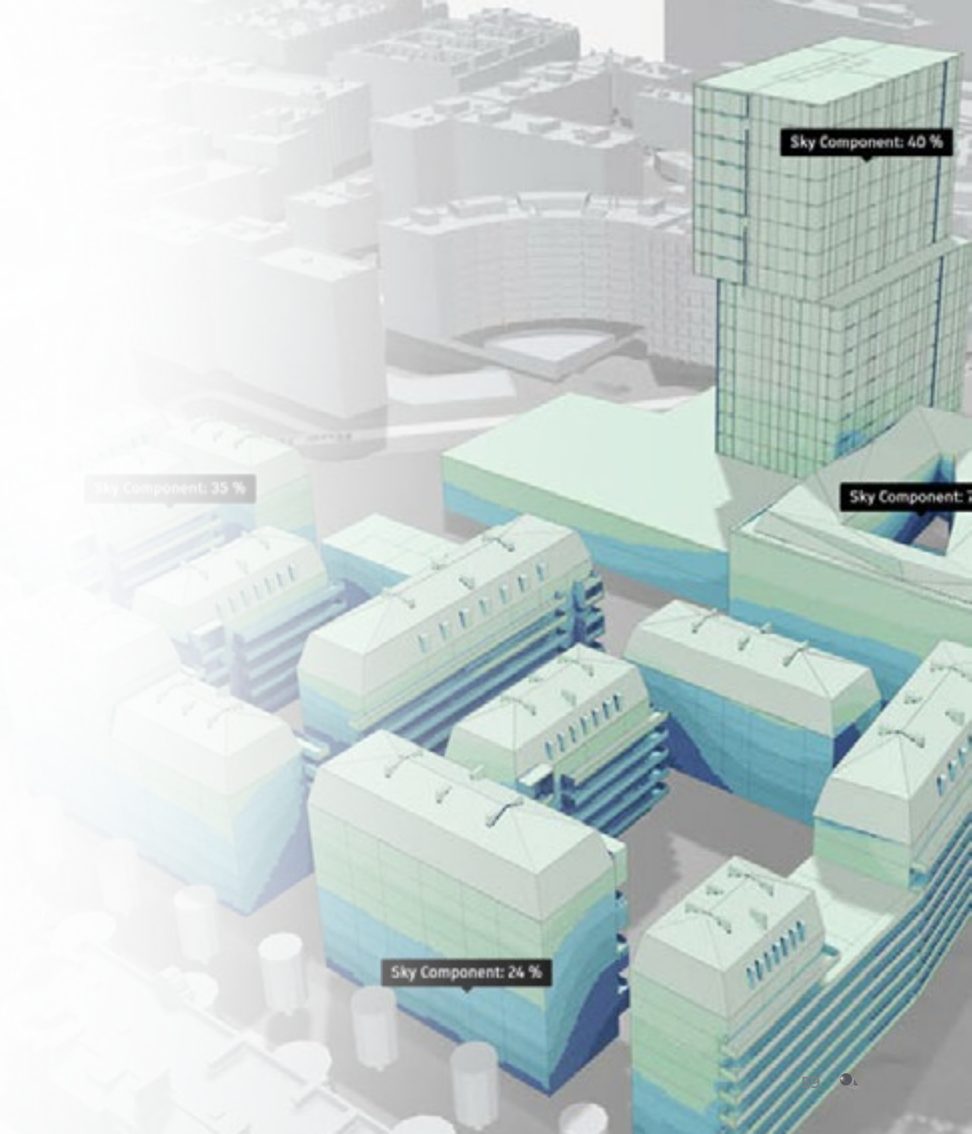
BIM visualization with **Revit** and **V-Ray** creates detailed and photorealistic architectural representations, simulating lighting, textures, and effects to optimize design and presentation.



+



Autodesk Revit with **BIM Collaborate** integrates 3D design and real-time collaboration, enabling model sharing, conflict detection, and improved efficiency in projects.





Autodesk Training



Civil 3D

The **Civil 3D** course will provide you with the skills to design and analyze civil engineering projects, including roads, drainage systems, and topography, among others.



AutoCAD

The **AutoCAD** course provides knowledge and skills in computer-aided design, enabling the creation of technical drawings and precise plans for architecture, engineering, and industrial design.



Navisworks

Navisworks Manage provides skills for coordinating, reviewing, and simulating architecture and engineering projects, improving management and efficiency in project planning and execution.

Capacitaciones Bentley Systems



Bentley training partners are highly qualified to help our users acquire the right skills in the latest **Bentley Systems** applications.

Our training provides hands-on experience through work-related exercises, based on real-world industry scenarios. Among our training offerings, we have:

- **Connection Analysis and Design with RAM Connection**
- **Structural Analysis and Design with STAAD.Pro**
- **Foundation Analysis and Design with STAAD Foundation**
- **Project Management with Synchro**





Microsoft Training



Project

The Project Management course will provide you with the skills to plan, schedule, and control projects efficiently, using **Microsoft Project** for effective management.



Power BI

The Power Query Reporting and Reporting Course with **Microsoft Power BI** will provide you with knowledge in creating visual reports and advanced data analysis.



Dynamics 365

The **Microsoft Dynamics 365** course will provide you with an overview of the ERP and CRM tools that Dynamics makes available to you.

Professional Certifications



Adobe



AUTODESK

Professional certifications are a valuable tool for enhancing employability, increasing earnings, and demonstrating professional commitment. If you're looking to stand out in today's job market, obtaining a professional certification in your area of expertise can be an excellent decision.

AEC Institute holds the Certiport Authorized Test Centers (CATCs) seal, allowing us to certify professionals in the use of **Autodesk** and **Adobe** tools. We are also accredited by buildingSMART Spain for the Professional Certification Program.



Autodesk Certifications



Revit certifications validate the skills and knowledge of candidates at both the user and professional levels in architectural, structural, and MEP design.



The user and professional certifications in **AutoCAD** validate knowledge in technical drawing and CAD design.



Autodesk Certifications



The Autodesk certification in **Fusion 360** demonstrates skills in product development using 3D CAD, CAM, and CAE tools.



Inventor certifications validate competencies in mechanical design and 3D modeling.



The professional certification in **Civil 3D** certifies your skills in the design and analysis of infrastructure projects.



Adobe Certifications



The Visual Design using **Adobe Photoshop** certification validates your skills in creating and editing professional images and designs.



The Graphic Design & Illustration using **Adobe Illustrator** certification validates your skills in graphic design and illustration.



The Print & Digital Media Publication using **Adobe InDesign** certification validates skills in creating graphic and editorial content.



BuildingSMART Certification

The **BuildingSMART BIM Foundations** Certification provides a solid understanding of the basic principles and core concepts of the BIM methodology.





WHY IMPLEMENT SPECIALIZED TRAINING WITH US?

Continuous education is a key asset in strengthening technical, managerial, and innovation skills within the construction industry. At **AEC Institute**, we have qualified instructors with hands-on experience in methodologies such as **BIM, Lean Construction, and Project Management**. They provide guided training focused on reinforcing the specialized knowledge required to optimize workflows and operational processes within companies.

In collaboration with **AEC Software** a company dedicated to the distribution of digital solutions for the **AEC Industry and C&C Consulting Construction Group México**, we have access to a diverse team of professionals in fields such as architecture, civil engineering, project management, and audiovisual media. These professionals use a wide variety of software solutions and possess deep industry knowledge.

This gives us a comprehensive perspective on interoperability workflows between tools, which has enabled us to train a wide range of companies, independent professionals, and students in architecture, engineering, and construction.



Thanks to the support of our teaching and professional team, we have become strategic partners in specialized training and implementation, working closely with our clients and offering guidance to help sustain a culture of continuous improvement.

Through our specialized consulting, you have the opportunity to evaluate the implications of integrating new technologies and work methodologies, as well as the return on investment analysis that decision-makers need to clearly understand business plan performance.

When it comes to acquiring specialized training, there is an undeniable reality: price competition. However, we know our added value as consultants and strategic partners allows us to deliver proposals that truly understand the essence and vision of your business positioning us as an integrated solution that directly addresses your company's needs and challenges.



PROJECT PORTFOLIO



**Consulting &
Construction**
Integrated Solutions for the AEC Industry

PROJECTS IN THE COMMERCIAL SECTOR





CASCOS ROJOS

Client: **Walmart de México**
Location: **Various States of the Mexican Republic | 2021 – 2022**

Monitoring and control in accordance with Walmart's Health and Safety Management System requirements during the execution of maintenance work in operational stores throughout Mexico.

Services



HSE
Supervision

ALLURE GEORGIA

Client: **Allure Georgia**

Location: **Miami, Florida, USA | 2023**

Laser scanning for point cloud capture and BIM model development for the accurate documentation and management of existing buildings and infrastructures.

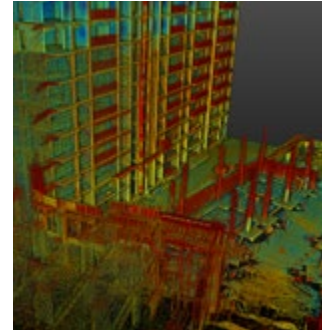
Services



Reality
Capture



BIM
Outsourcing





TECHNOLOGY IMPLEMENTATION

Client: **Coppel**

Location: **Guadalajara, Jalisco, Mexico | 2021**

Proposal of technologies for surveying the needs of selected stores in operation for remodeling and the development of pilot tests.

Services



Business
Consulting



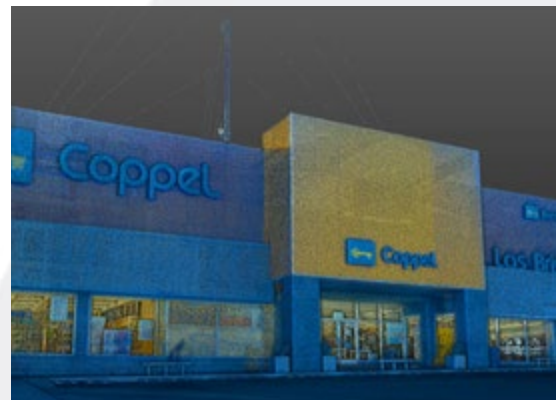
Digital
Photography



Reality
Capture



BIM
Outsourcing





TECHNOLOGY IMPLEMENTATION

Client: **Coppel**

Location: **Culiacán, Sinaloa, Mexico | 2024**

High-precision laser scanning for site data capture, integration with the Oculo platform for visual inspection and 360° recording, and BIM coordination to optimize collaboration between disciplines, ensuring accuracy and efficiency throughout all phases of the project.

Services



Business Consulting



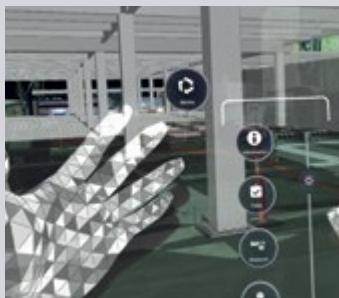
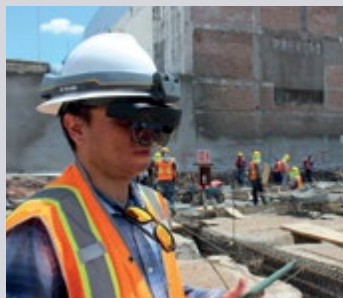
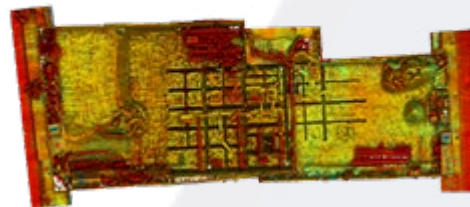
Digital Photography

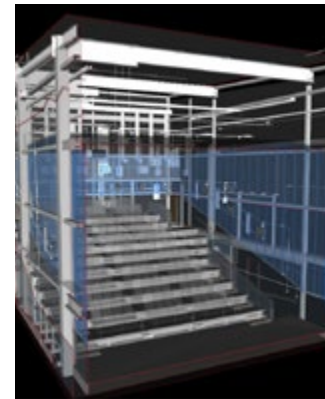


Reality Capture



BIM Outsourcing





BIM IMPLEMENTATION

Client: **Cinépolis - Movie Theater Holding Company**

Location: **Morelia, Michoacán, Mexico | 2018 – 2019**

Design and implementation of the BIM implementation strategy for the Architecture Division of the corporation for new projects.

Services



BIM
Consulting



BIM
Outsourcing



Software
Supply



Training



BIM DIAGNOSIS

Client: **Casa Ley**

Contractor: **Virtual Bridge of Latin America**

Location: **Culiacán, Sinaloa, Mexico | 2018**

Requirements gathering and solution design for BIM implementation in the Design and Construction Division of Casa Ley Corporation.

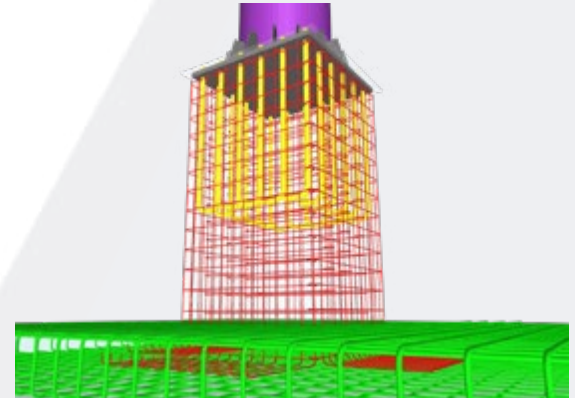
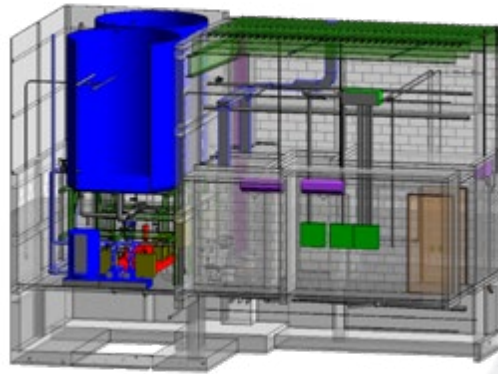
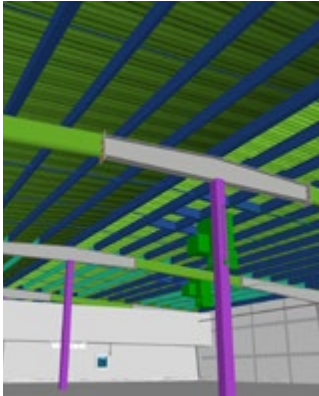
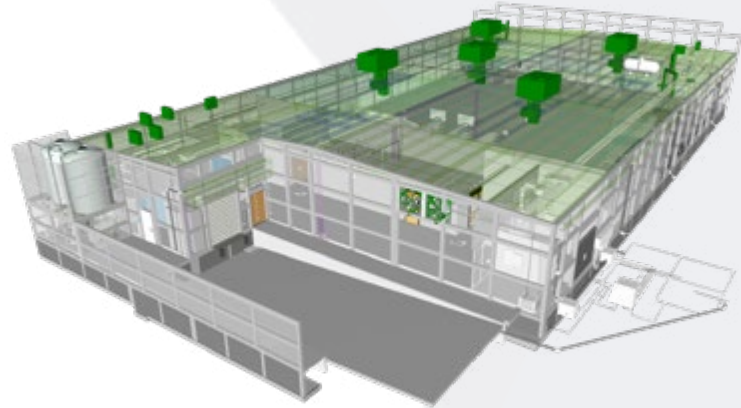
Services

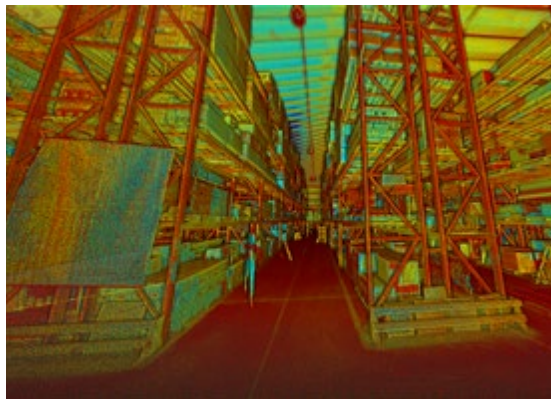


Business
Consulting



BIM
Outsourcing





AZYCO PERIFÉRICO HEADQUARTERS EXPANSION

Client: **Azulejos y Complementos**

Location: **Zapopan, Jalisco, Mexico | 2018**

Design and construction of the expansion and renovation of the industrial warehouse, loading dock, and sales room.

Services



Architectural
Design



Structural
Design



General
Contractor



PUNTO BAHÍA

Client: **Punto Bahía - OMG Inmobiliaria**
Location: **Manzanillo, Colima, Mexico | 2016**

Design and construction of steel structures for structural reinforcement of existing buildings and complementary new works.

Services

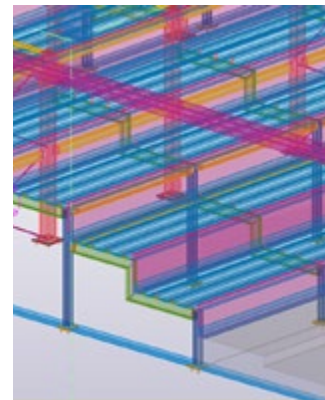
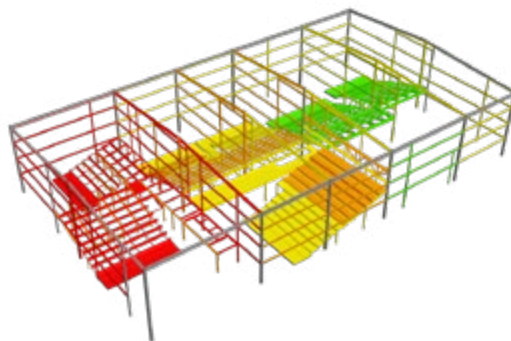


Structural
Design



Metallic Structure
Subcontractor





CINÉPOLIS MANZANILLO

Client: **Cinépolis - Movie Theater Holding Company**

Contractor: **D.H.I. Construcciones**

Location: **Manzanillo, Colima, Mexico | 2016**

Construction of steel structures for projection rooms and service areas.

Services



BIM
Outsourcing



Metallic Structure
Subcontractor



CHEDRAUI SANTA FE

Client: **Tiendas Chedraui**

Contractor: **Lonas Lorenzo**

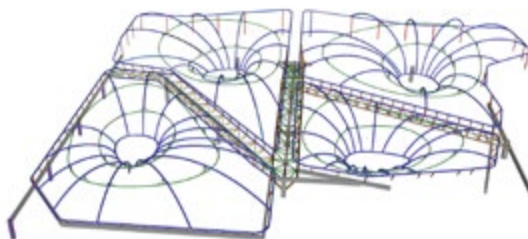
Location: **Mexico City, Mexico | 2013**

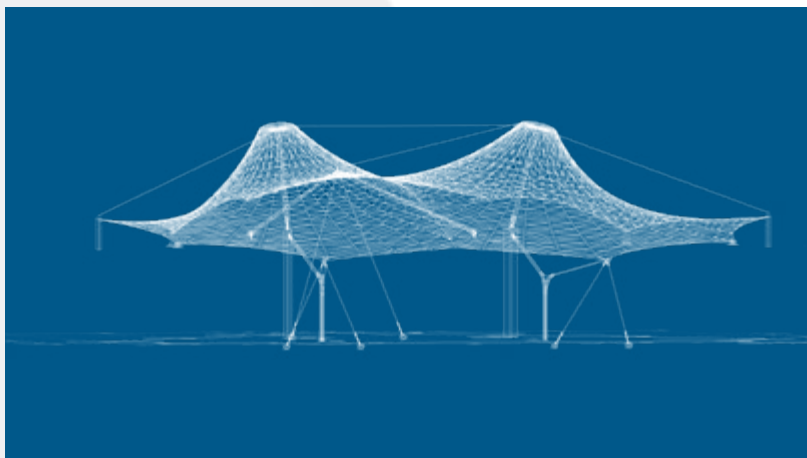
Construction of non-conventional steel structure for roof with architectural membrane (tensile structure).

Services



Metallic Structure
Subcontractor





GRAN TERRAZA BELENES

Client: **Grupo Gigante Inmobiliario**

Contractor: **Lonas Lorenzo**

Location: **Guadalajara, Jalisco, Mexico | 2012**

Construction of non-conventional steel structure for roof with architectural membrane (tensile structure).

Services



Metallic Structure
Subcontractor



GRAN TERRAZA OBLATOS

Client: **Grupo Gigante Inmobiliario**

Contractor: **Lonas Lorenzo**

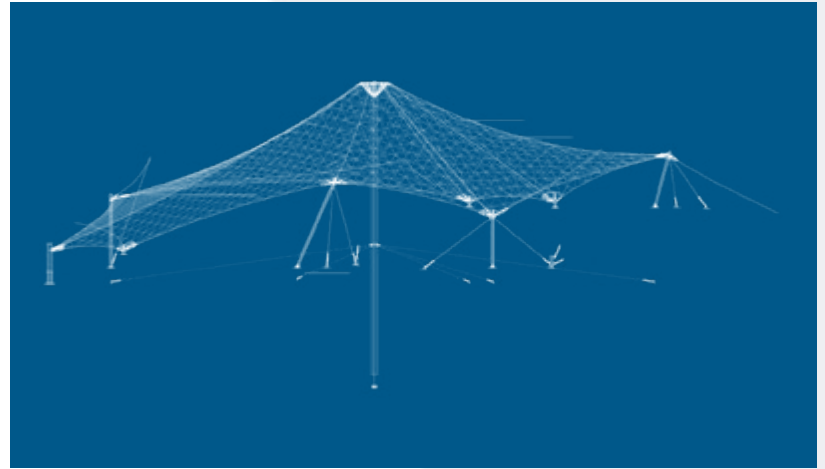
Location: **Guadalajara, Jalisco, Mexico | 2012**

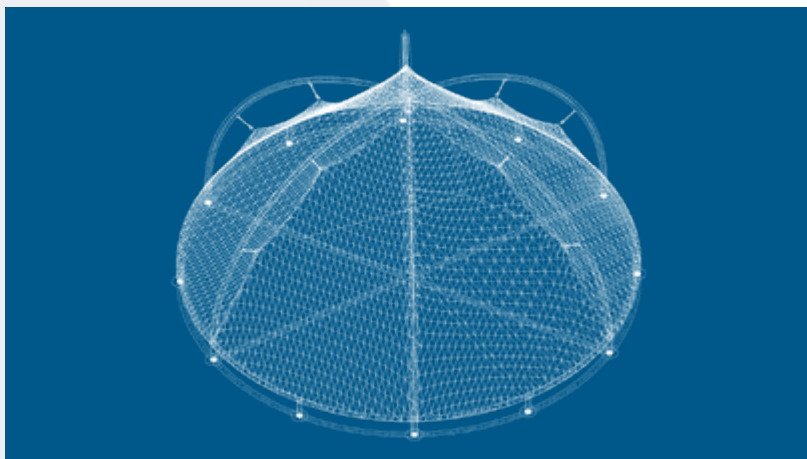
Construction of non-conventional steel structure for roof with architectural membrane (tensile structure).

Services



Metallic Structure
Subcontractor





EXPANSION OF CENTRO SANTA FE

Client: **Centro Santa Fe**

Contractor: **Lonas Lorenzo**

Location: **Mexico City, Mexico | 2011**

Construction of Non-Conventional Steel Structure for Roof with Architectural Membrane (Tensile Structure).

Services



Metallic Structure
Subcontractor

COMERCIAL GRANADA

Contractor: **Vargas & Suarez Arquitectos**

Location: **Cali, Valle del Cauca, Colombia | 2008**

Design and Construction of Steel Structure for Commercial Spaces.

Services

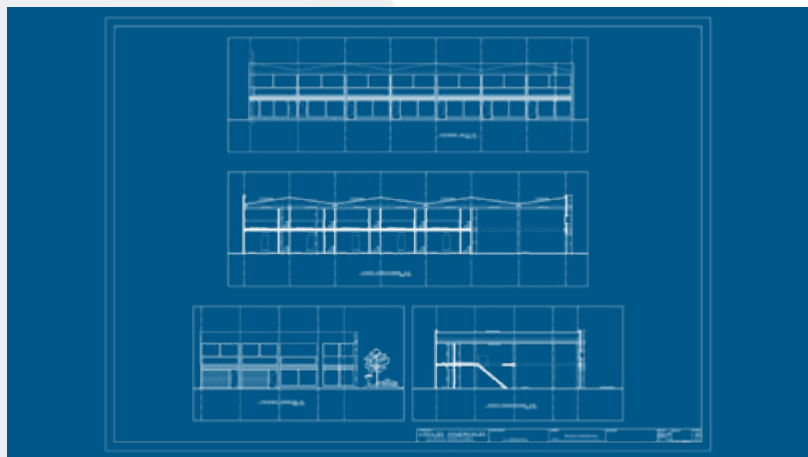


Structural
Design



Metallic Structure
Subcontractor





COMERCIAL ROOSEVELT CON QUINTA

Contractor: **Interdrogas**

Location: **Cali, Valle del Cauca, Colombia | 2008**

Design and construction of steel structure for commercial spaces.

Services



Structural
Design



Metallic Structure
Subcontractor



CARREFOUR

Contractor: **Induvel**

Location: **Buga, Colombia | 2006**

Construction of the steel structure for the store and storage warehouse.

Services



Subcontractor
Steel Structure





EXPANSION OF CHIPICHAPE SHOPPING CENTER

Client: **Centro Comercial Chipichape**

Contractor: **SAINC Ingenieros Constructores - Perfilamos**

Location: **del Cauca. Cali, Valle del Cauca. Colombia | 2006**

Manufacturing of Structural Steel Beams for Floor Systems.

Services



Subcontractor
Steel Structure



HOME CENTER CHIPICHAPE

Client: **Homecenter | Sodimac Colombia**

Contractor: **B&V Estructuras Metálicas**

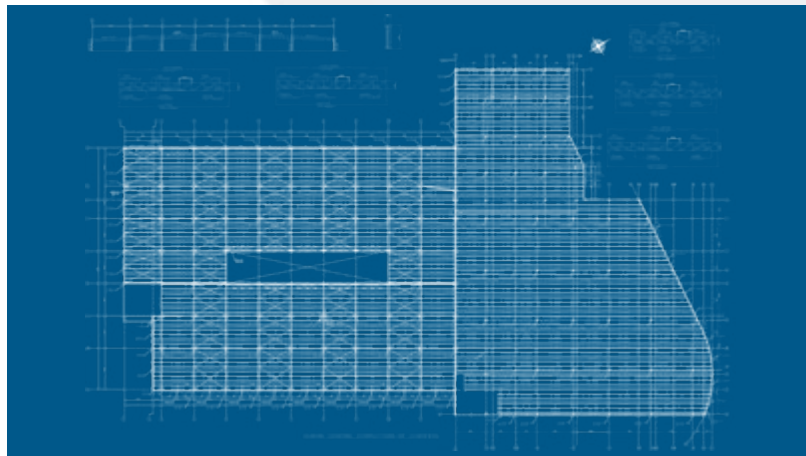
Location: **Cali, Valle del Cauca, Colombia | 2006**

Manufacturing of steel structure for roof.

Services



Subcontractor
Steel Structure





RECONSTRUCCIÓN LA FERIA DE LAS PINTURAS NORTE

Client: **Distriferias**

Location: **Cali, Valle del Cauca Colombia I 2005**

Demolition, Design, and Construction of Commercial Store with Steel Structures.

Services



Design
Structure



Subcontractor
Demolition



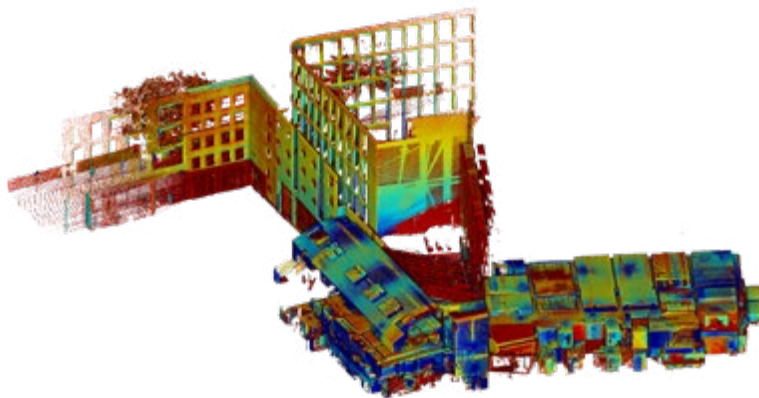
Subcontractor
Steel Structure



**Consulting &
Construction**
Integrated Solutions for the AEC Industry

PROJECTS IN THE RESIDENTIAL AND HOTEL SECTOR





GRIMSHAW BUILDING

Client: **GCP Facilities**

Location: **London, United Kingdom | 2024**

High-precision Laser Scanning for Operation and Maintenance (O&M), providing detailed and updated documentation that facilitates efficient management and continuous monitoring of the project's assets.

Services



Reality
Capture

GGM 115

Client: **GCP Facilities**

Location: **London, United Kingdom | 2024**

High-precision Laser Scanning for Operation and Maintenance (O&M), providing detailed and updated documentation that facilitates efficient management and continuous monitoring of the project's assets.

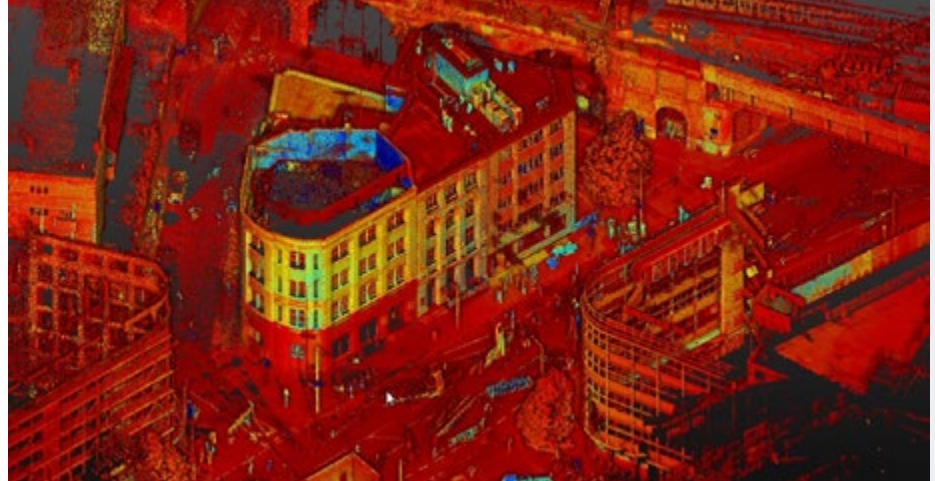
Services

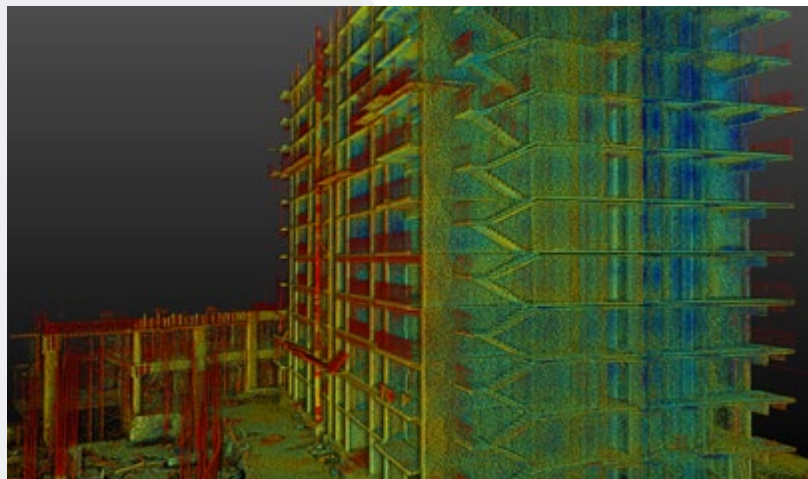


Reality
Capture



BIM
Outsourcing





GRAND VALBUENA RESIDENTIAL COMPLEX

Client: **Gran Vivir**

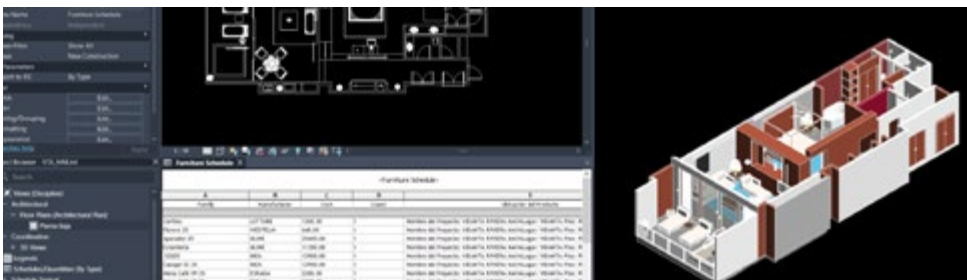
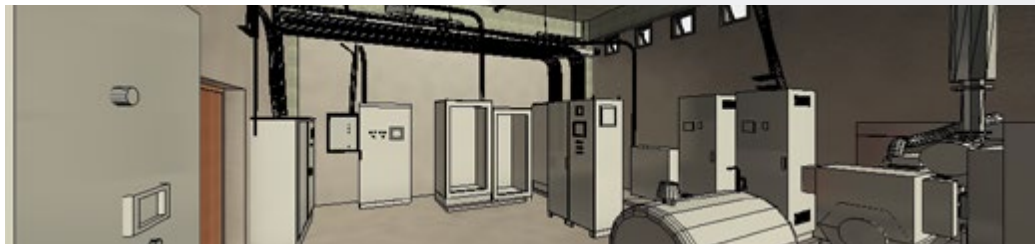
Location: **Lagos de Moreno, Guanajuato - México | 2022 - 2023**

High-precision Laser Scanning complemented with photogrammetric surveying and the creation of a topographic map, providing detailed and accurate documentation of the terrain for optimal project analysis and planning.

Services



Reality
Capture

GRUPO
VIDANTA®

GRUPO VIDANTA

Client: **GRUPO VIDANTA**

Location: **México | 2024**

Laser Scanning for Point Cloud Capture and BIM Model Development for the accurate documentation and management of machine rooms, electrical rooms, and sample rooms.

Services



Captura de la Realidad

360
Photography

BIM Outsourcing

RESIDENTIAL / CASA ALEBRIJES

Client: **Particular**

Location: **Akumal, México | 2023**

High-precision Laser Scanning to capture current conditions, creation of a BIM model for digital project management, and integration with the Oculo platform for 360° visual inspection, ensuring detailed and accessible documentation throughout all stages of development.

Services



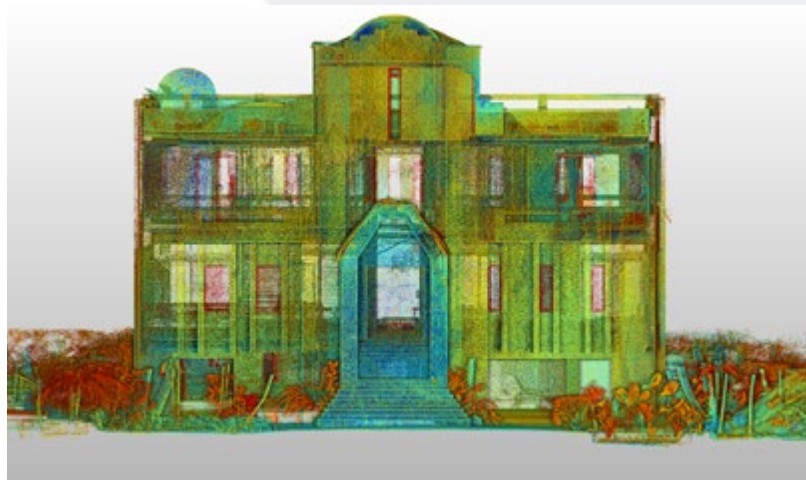
Reality
Capture

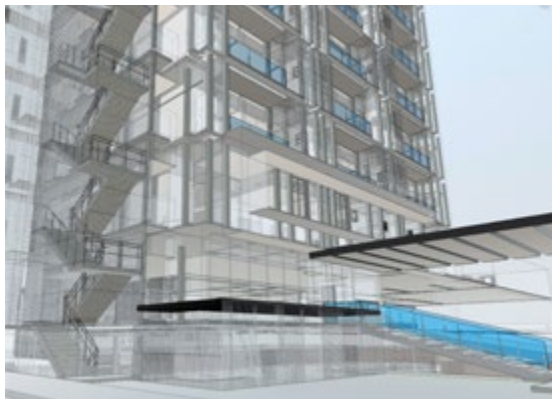


360
Photography



Project
Management





LEONES LIVING

Client: **Inmobiliaria Vidusa**

Location: **Various locations in Mexico | 2021 - 2022**

Feasibility Studies, Design Coordination, and Budget Implementation using BIM.

Services



Project
Management



BIM
Coordination



MATAMOROS LIVING

Client: **Inmobiliaria Vidusa**

Location: **Monterrey, Nuevo León, Mexico | 2021 - 2022**

Feasibility Studies, Design Coordination, and Budgeting
Implementing BIM.

Services



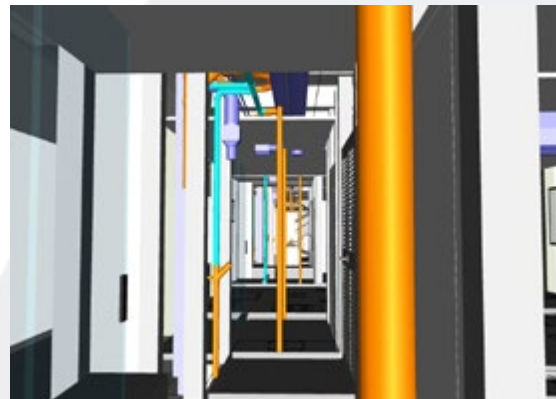
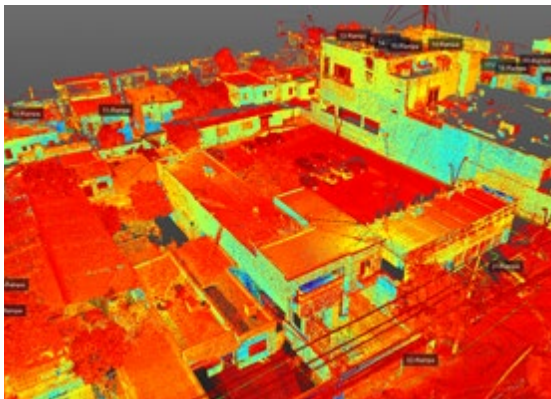
Project
Management

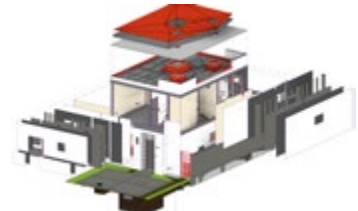


BIM
Coordination



Reality
Capture





KULKANA

Client: **Tierra y Armonía**

Location: **Cancún, Quintana Roo, Mexico | 2021 - 2022**

Development of BIM Models for Building Prototypes and Amenities.

Services



BIM
Outsourcing



BIM
Coordinación





JUSTO SIERRA

Client: **Ruba Residencial - Lodela**

Location: **Guadalajara, Jalisco, Mexico | 2020 - 2022**

Development of Architectural, Structural, and MEP Engineering
BIM Models for design coordination and construction.

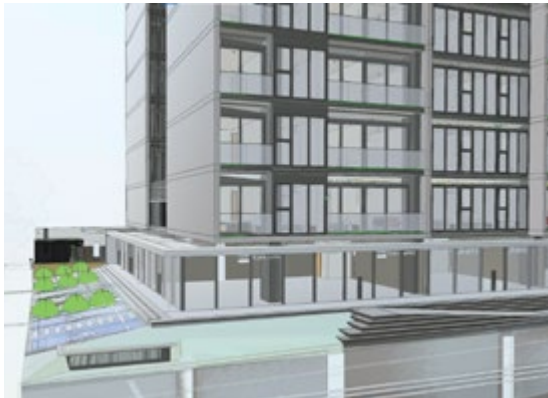
Services

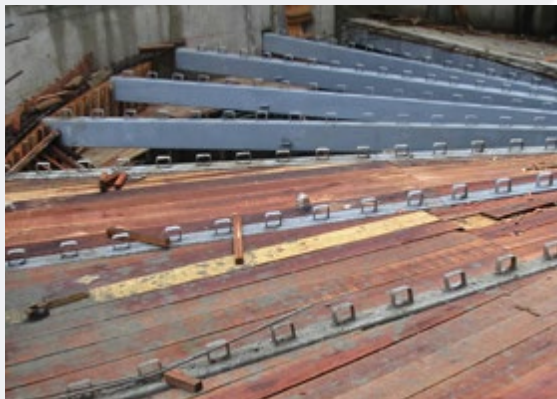


BIM
Outsourcing



BIM
Coordination





PORTÓN DEL OESTE

Client: **SAINC Ingenieros Constructores**

Contractor: **Perfilamos del Cauca**

Location: **Cali, Valle del Cauca, Colombia | 2005**

Manufacturing of Structural Steel Beams for
Floor Systems.

Services



Subcontractor
Metal Structure

CAPITAL SUR

Client: **Tierra y Armonía**

Location: **Queretaro, Mexico | 2020 - 2022**

Development of BIM Models for building prototypes.

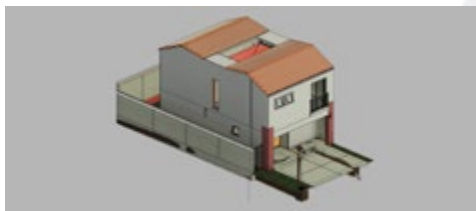
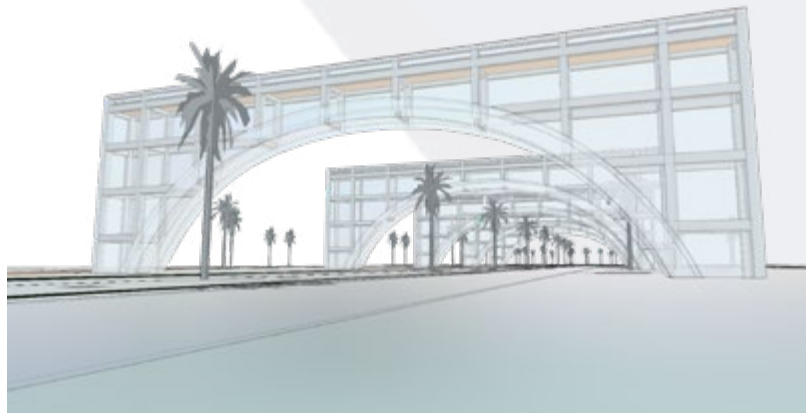
Services

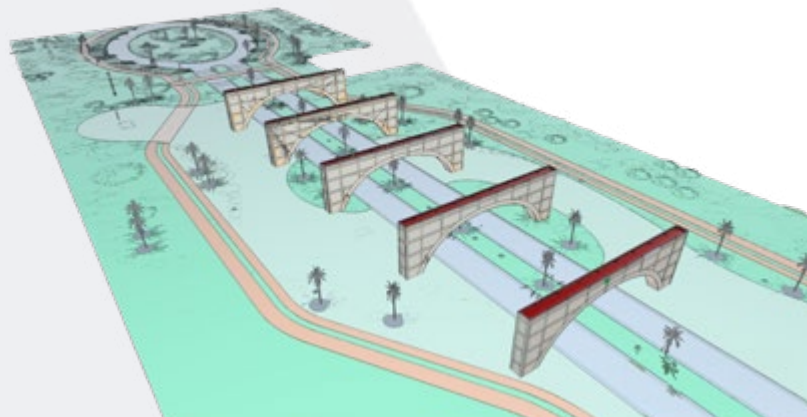


BIM
Outsourcing



BIM
Coordination





ALVA RESIDENCIAL

Location: **Zapopan, Jalisco, Mexico | 2020 - 2021**

Development of BIM Models for building prototypes.

Services



BIM
Outsourcing



BIM
Coordination



FEDERALTA

Client: **Ruba Residencial - Lodela**

Location: **Guadalajara, Jalisco, Mexico | 2019 - 2021**

Development of Architectural, Structural, and MEP BIM Models for design coordination and construction.

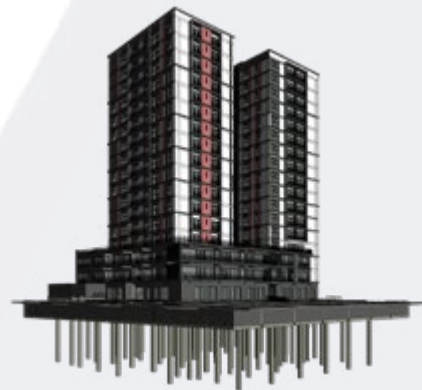
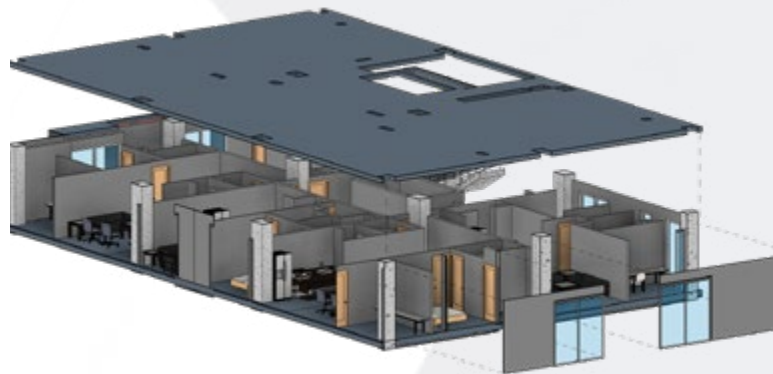
Services



BIM
Outsourcing



BIM
Coordination





ATENAS URBAN LIVING

Client: **Grupo Allegra**

Location: **Guadalajara, Jalisco, Mexico | 2019 - 2020**

Development of BIM Model for design coordination and construction.

Services



BIM
Outsourcing



BIM
Coordination



BALANTY

Client: **Ruba Residencial - Lodela**

Location: **Guadalajara, Jalisco, Mexico | 2019 - 2020**

Development of BIM Model for design coordination and construction.

Services

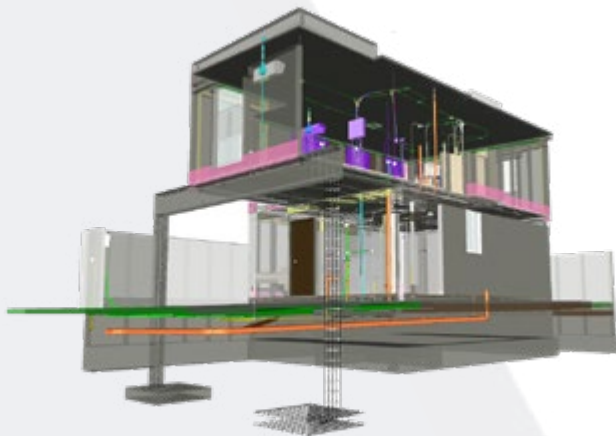
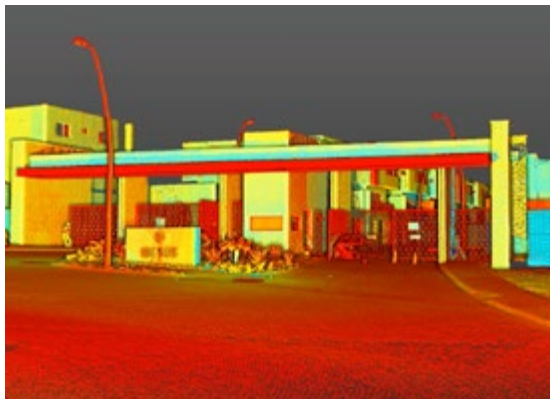


BIM
Outsourcing



BIM
Coordination





PUERTA DE HIERRO - LINES

Client: **Inmobiliaria Vidusa**

Location: **Monterrey, Nuevo León, Mexico | 2019**

Development of BIM Models for building prototypes.

Services



Outsourcing
BIM



BIM
Coordination



Reality
Capture



Extended
Reality



JS 2073

Client: **Grupo Allegra**

Location: **Guadalajara, Jalisco. Mexico | 2019 - 2020**

Development of Architectural, Structural, and MEP BIM Model for design coordination and construction.

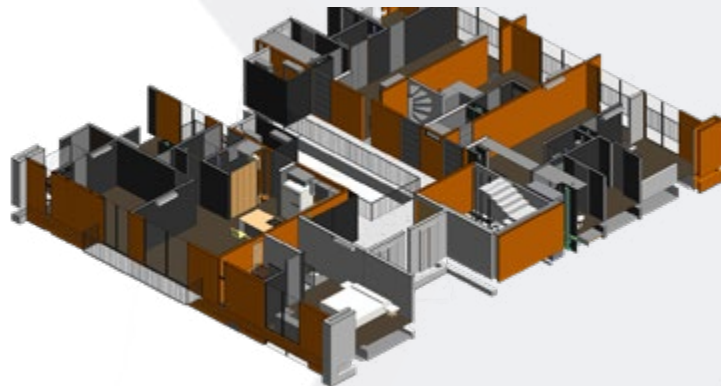
Services



BIM
Outsourcing



BIM
Coordination





IMPLEMENTACIÓN PMO

Client: **Inmobiliaria Vidusa**

Location: **Monterrey, Nuevo León. Mexico | 2018 - 2020**

Business Consulting for the Design and implementation of the Project Management Office using Lean Construction tools and the BIM methodology according to PMI criteria.

Services



Project
Management
Consulting



Lean
Consulting



BIM
Consulting



Training

grupAXERTA

CORTEZA RESIDENCIAL

Client: **Grupo Axerta**

Location: **Guadalajara, Jalisco. Mexico | 2017 - 2019**

Technical Coordination and Construction Supervision
implementing BIM and Lean Construction.

Services



Construction
Management



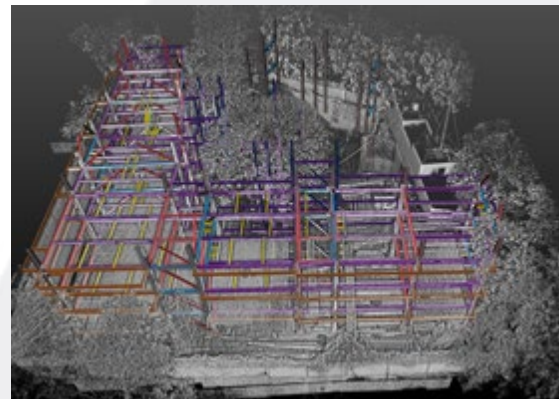
Lean
Consulting

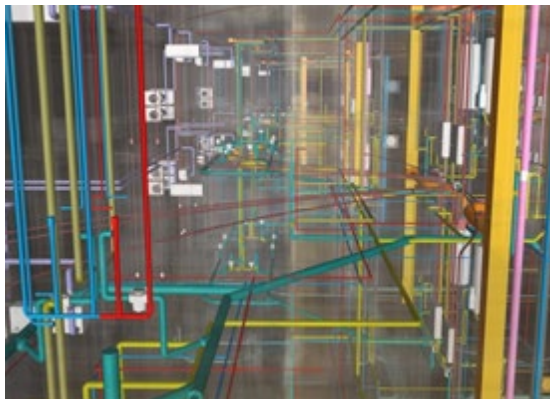


BIM
Consulting



Reality
Capture





LIFE PATRIA

Client: **Tierra y Armonía**

Location: **Zapopan, Jalisco, Mexico | 2016**

Development of Architectural, Structural, and MEP BIM Models for design coordination and construction.

Services



BIM
Outsourcing



BIM
Coordination

grupAXERTA®

CLASSIQA CHAPALITA

Client: **Grupo Axerta**

Location: **Zapopan, Jalisco, Mexico | 2016**

Development of Architectural, Structural, and MEP BIM Models for design coordination and construction.

Services

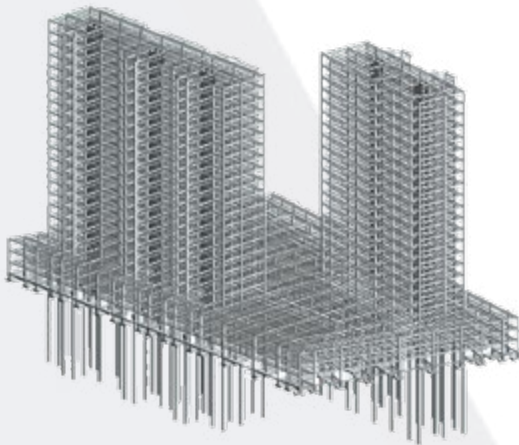
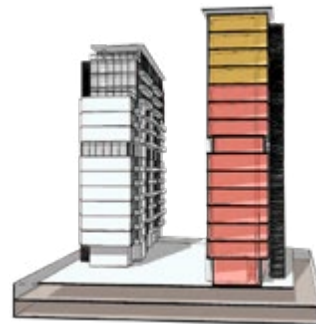
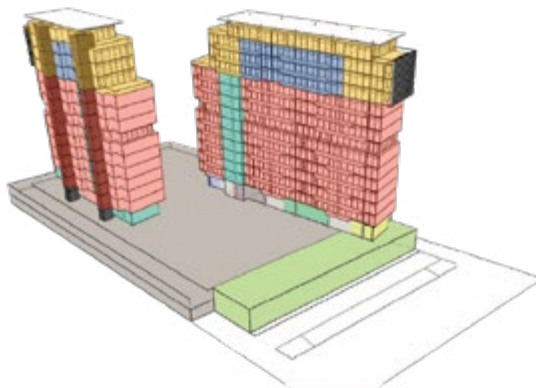


BIM
Outsourcing



BIM
Coordination





TORRE VILLAHERMOSA

Client: **GVA Arquitectura Integral**

Location: **Villahermosa, Tabasco, Mexico | 2015**

Preparation of Architectural BIM Model and development of Structural and MEP Designs at the conceptual and schematic level.

Services



Structural
Design



BIM
Outsourcing



TORRES LA TOSCANA

Client: **Tierra y Armonia**

Location: **Zapopan, Jalisco. Mexico | 2015**

Development of Architectural, Structural, and MEP BIM Models for design coordination and construction.

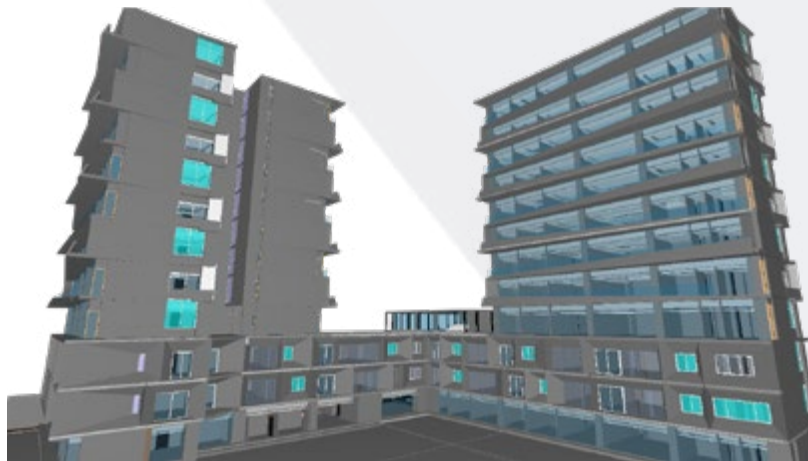
Services

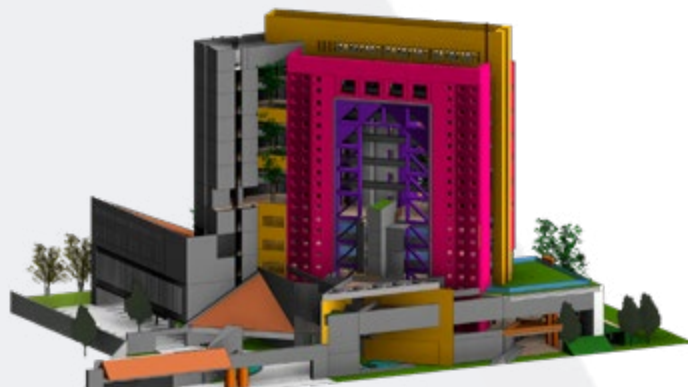


BIM
Outsourcing



BIM
Coordination





CENALTUR

CENTRO NACIONAL DE ALTO TURISMO
Puerto Vallarta - Jalisco

HOTEL ESCUELA | CANALTUR VALLARTA

Client: **Cenaltur** | Centro Nacional de Alto Turismo

Location: **Puerto Vallarta, Jalisco, Mexico** | 2015

Development of Structural BIM Model.

Services



BIM
Outsourcing



PRADOS DE SAN AGUSTÍN

Client: **Skema Promotora**

Location: **Cali, Valle del Cauca, Colombia | 2014**

Structural Analysis and Calculation.

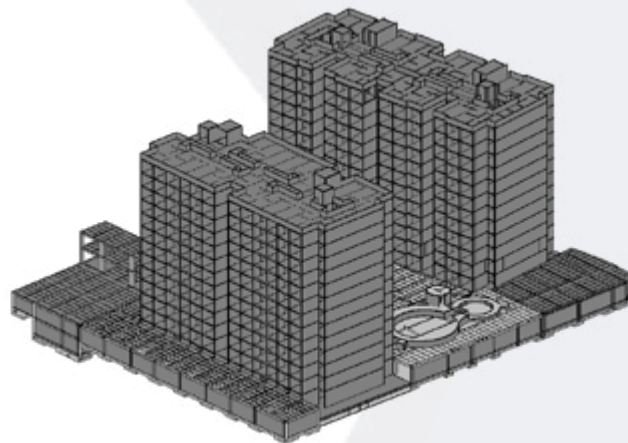
Services



Structural
Design



BIM
Outsourcing





SECRETS VALLARTA BAY

Client: **Secrets Resorts and Spas**

Contractor: **Lonas Lorenzo**

Location: **Puerto Vallarta, Jalisco, Mexico | 2012**

Construction of Non-Conventional Steel Structure for Roofs with Architectural Membrane (Tensile Structure).

Services



Subcontractor
Steel Structure

LOS CAZOS

Client: **Los Cazos**

Location: **Mazamitla, Jalisco, Mexico | 2021**

Topographic survey of a countryside lot using Point Clouds generated with Laser Scanning.

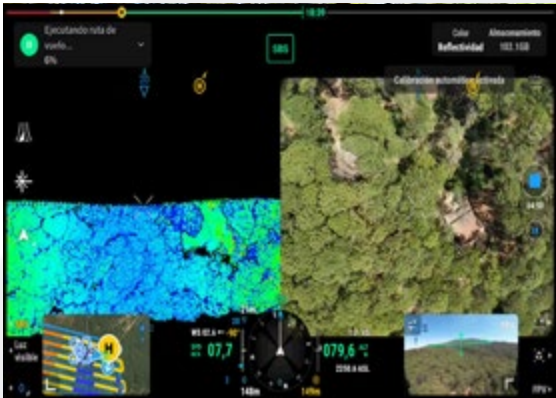
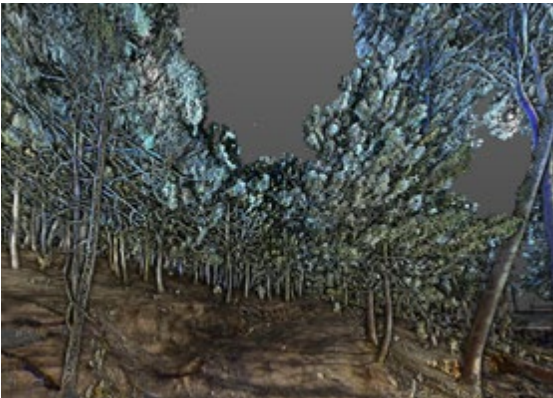
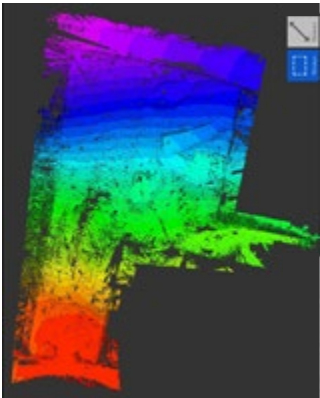
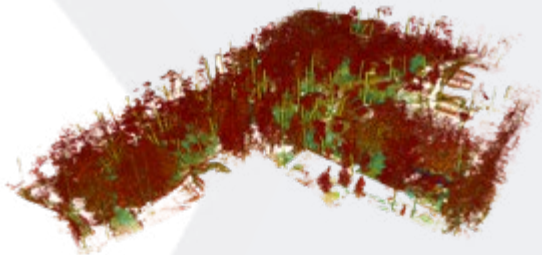
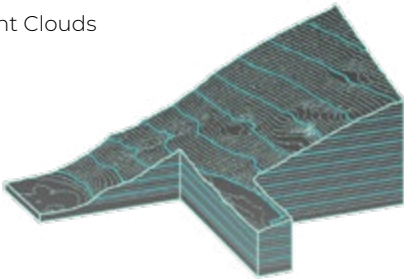
Services



Reality
Capture



Airborne
LIDAR





**Consulting &
Construction**
Integrated Solutions for the AEC Industry

PROJECTS MIXED-USE SECTOR





TORRES VIDUSA

Client: **Inmobiliaria Vidusa**

Location: **Monterrey, Nuevo León, Mexico | 2020**

Feasibility Studies, Architectural Design, and Design
Coordination using BIM.

Services



Project
Management



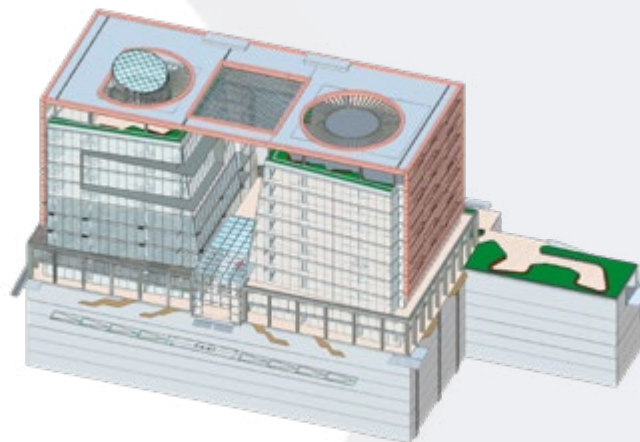
Architectural
Design

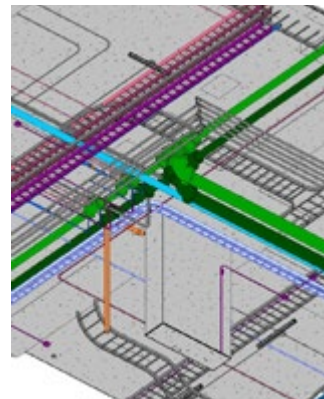
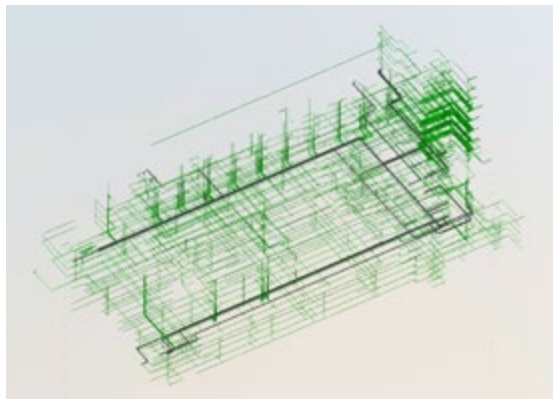
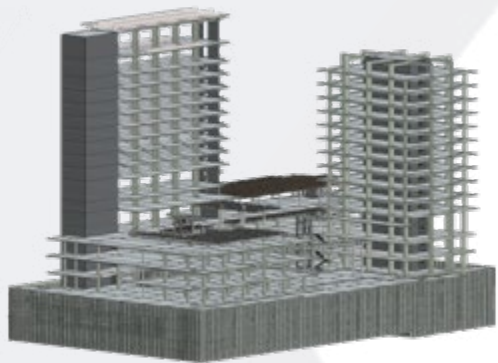


BIM
Coordination



Reality
Capture





PUNTO SUR LIFE STYLE CENTER

Client: **Centro Comercial Punto Sur**

Contractor: **Tierra y Armonía**

Location: **Tlajomulco, Jalisco, Mexico | 2015 - 2018**

Support in the development of Pre-Construction activities and Construction Supervision for Phase I, implementing BIM and Last Planner System.

Services



Quality
Management



Lean
Consulting



BIM
Outsourcing



BIM
Consulting



Reality
Capture



SENTURA TLALNEPANTLA

Client: **Urbana**

Contractor: **Trilobita - SICSA - Inmobiliaria Zona Mx**

Location: **Tlanepantla, Mexico | 2016 - 2021**

Coordination and Construction Supervision implementing BIM and Lean Construction.

Services



Construction
Management



Lean
Consulting



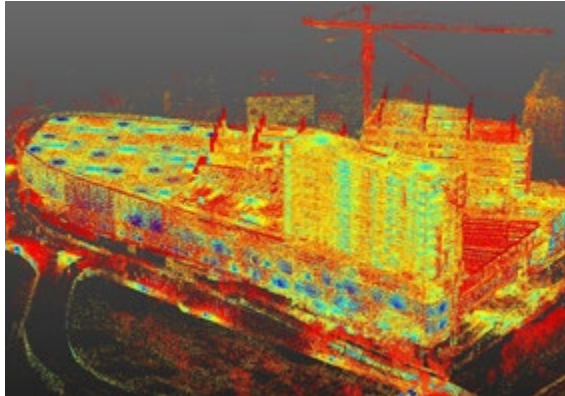
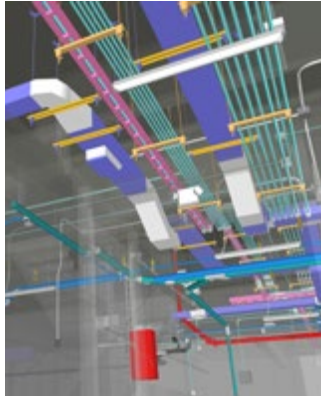
Outsourcing
BIM

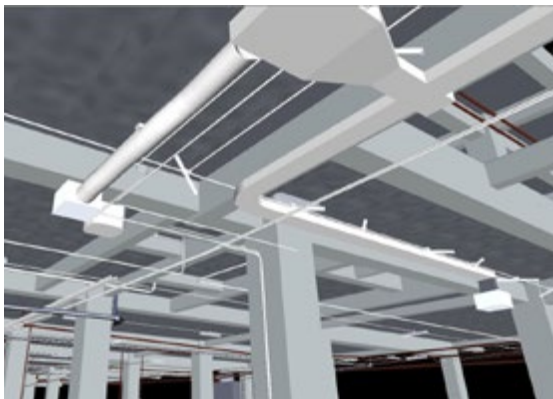


BIM
Consulting



Reality
Capture





PUNTO SUR LIFE STYLE CENTER

Client: **Centro Comercial Punto Sur**

Contractor: **Tierra y Armonía**

Location: **Tlajomulco, Jalisco, Mexico | 2015 - 2018**

Support in the development of Pre-Construction activities and Construction Supervision for Phase I, implementing BIM and Last Planner System.

Services



Quality
Management



Lean
Consulting



Outsourcing
BIM



BIM
Consulting



Reality
Capture



MALL PLAZA NQS

Client: **Inversiones La 14**

Contractor: **Inversiones La 14 - Lonas Lorenzo**

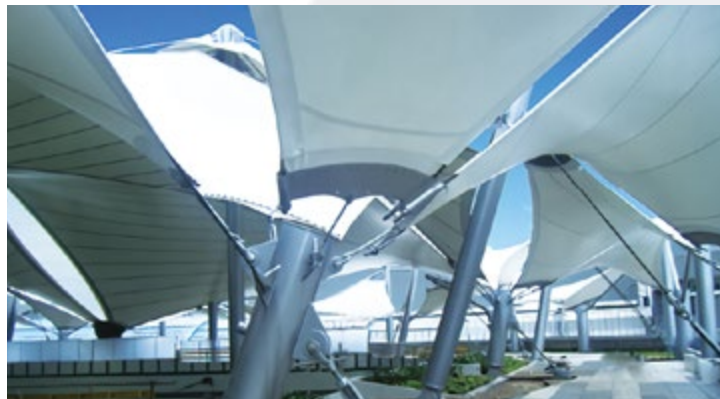
Location: **Bogotá D.C., Colombia | 2011**

Construction of Structure for Structural Reinforcement and Roof with Architectural Membrane (Tensile Structure).

Services



Subcontractor
Metal Structure





**Consulting &
Construction**
Integrated Solutions for the AEC Industry

INFRASTRUCTURE AND TRANSPORT SECTOR PROJECTS



AEROPUERTO INTERNACIONAL DE TIJUANA

Client: **GAP | Grupo Aeroportuario del Pacífico**

Location: **Tijuana, Baja California. Mexico | 2021**

Point Cloud Survey using Laser Scanner and development of BIM Models for Existing Buildings and General Perimeter.

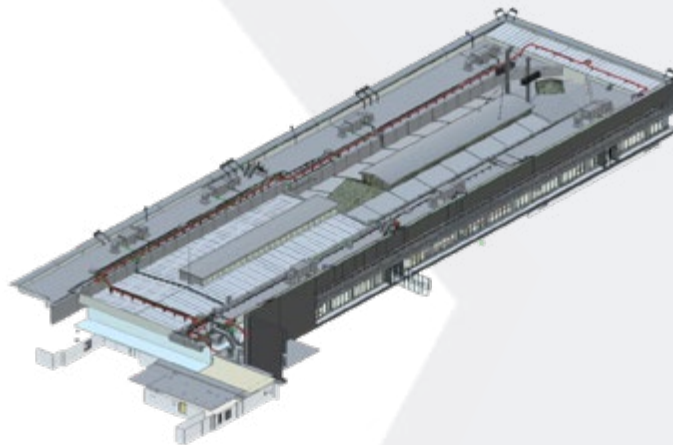
Services

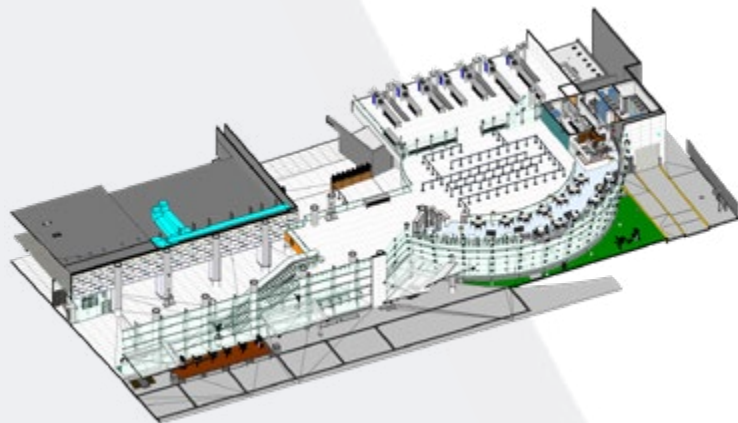
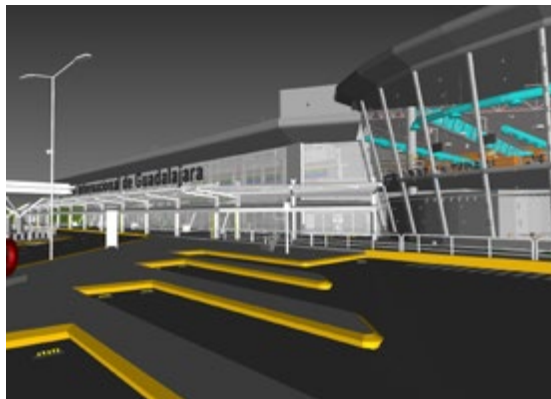
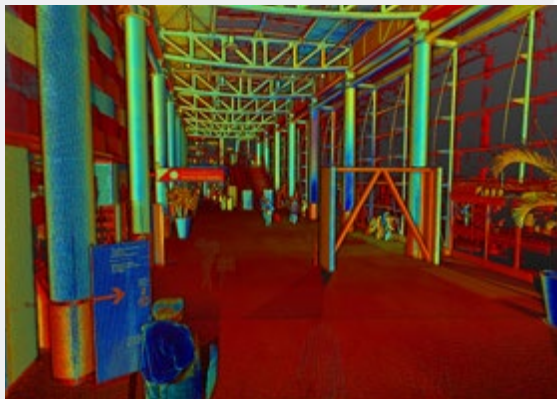


Reality
Capture



Outsourcing
BIM





AEROPUERTO INTERNACIONAL DE GUADALAJARA

Client: **GAP | Grupo Aeroportuario del Pacífico**

Location: **Guadalajara, Jalisco, Mexico | 2021**

Point Cloud Surveying using Laser Scanner and BIM Models
development for Existing Buildings and Infrastructure.

Services



Reality
Capture



Outsourcing
BIM



AEROPUERTO INTERNACIONAL DE LA CDMX

Client: **GAP |Grupo Aeroportuario del Pacífico**

Location: **Mexico City, Mexico | 2020**

Lean Consulting for the implementation of Last Planner System and the use of BIM models derived from Point Cloud surveys using Laser Scanning for construction control.

Services



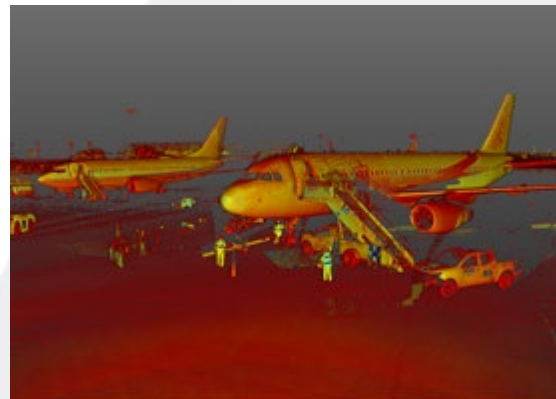
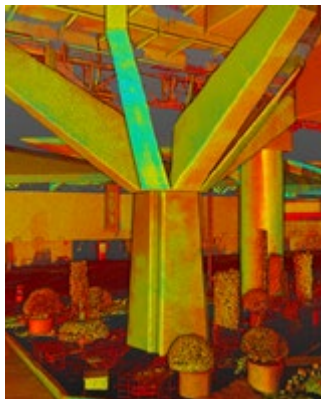
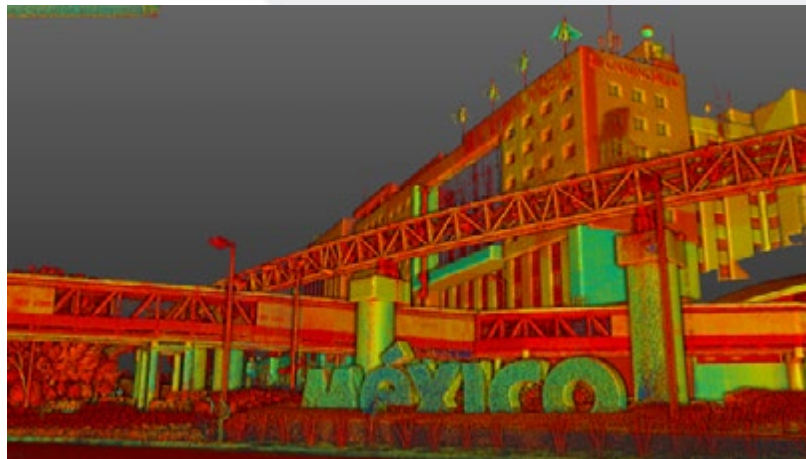
Reality
Capture

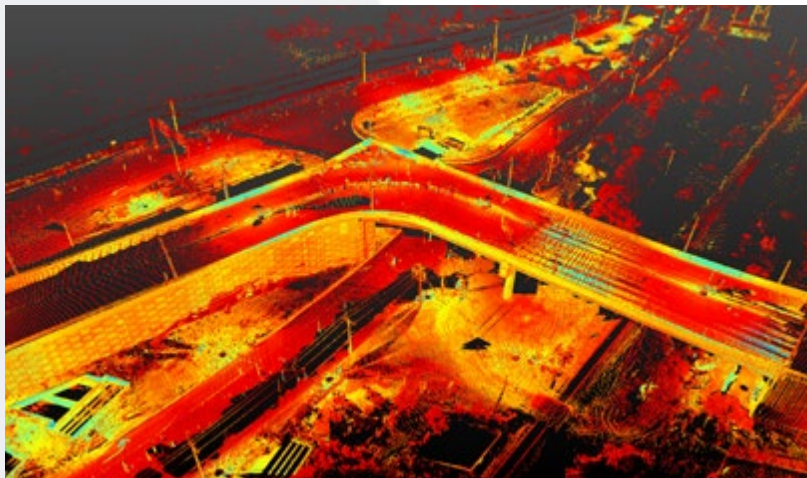


Outsourcing
BIM



Lean
Consulting





ROADWAY INTERSECTION BETWEEN LINCOLN AND KENNEDY STREETS

Contractor: **VIDUSA**
Location: **García, Mexico**

Point Cloud survey using laser scanning for construction control in civil structures, accurately documenting progress and current conditions to ensure execution is aligned with plans and specifications.

Services



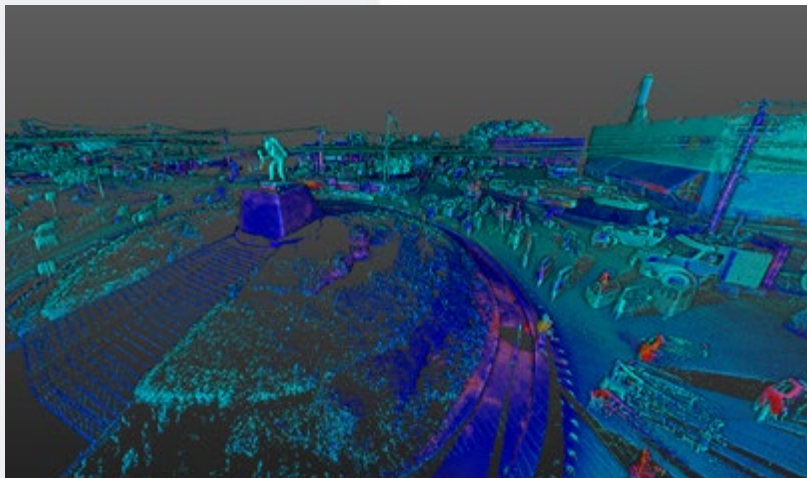
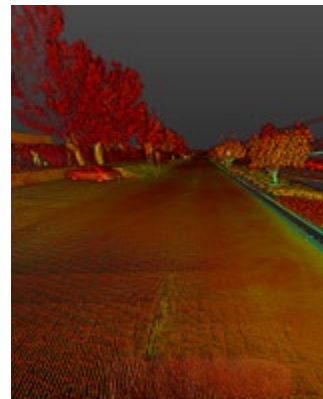
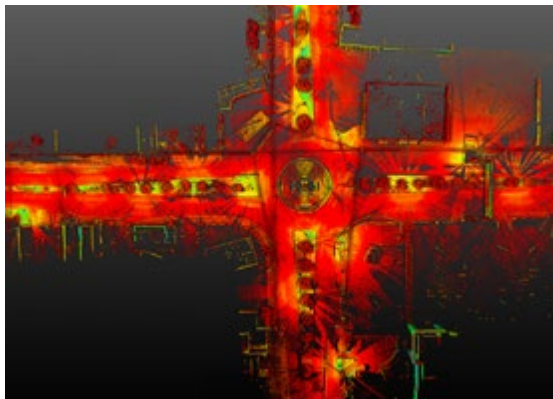
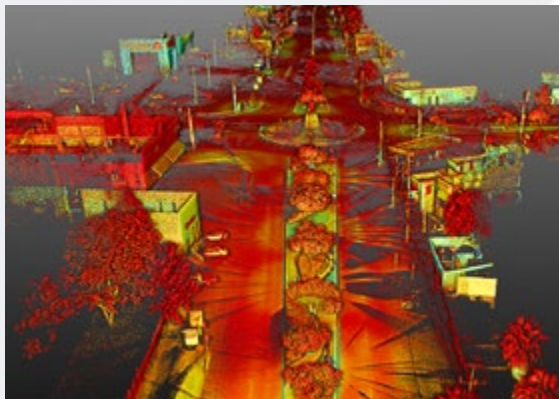
Reality
Capture



Outsourcing
BIM



Lean
Consulting



EL PÍPILA ROADWAY INTERSECTION

Contractor: **Grupo CASS**
Location: **San Miguel de Allende, Mexico**

Point Cloud survey using laser scanning to accurately document the existing conditions of a bridge, serving as the basis for its BIM model.

Services



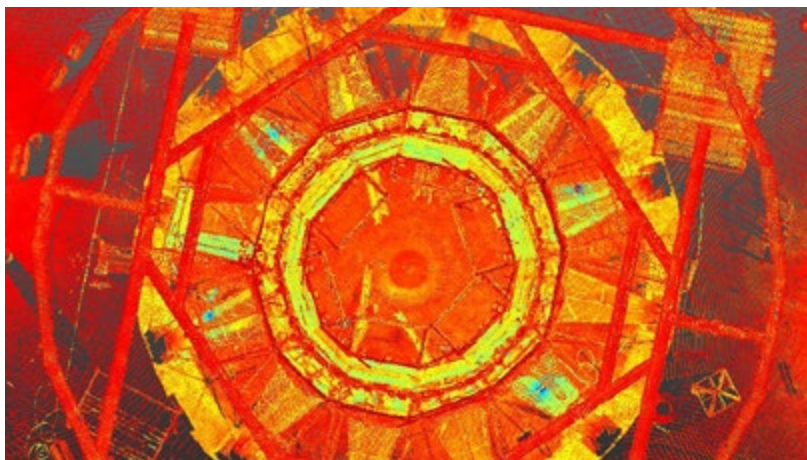
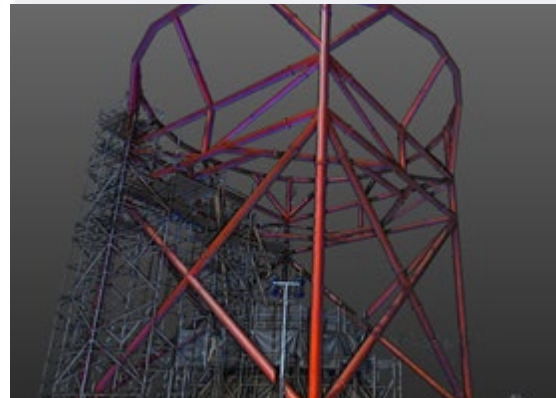
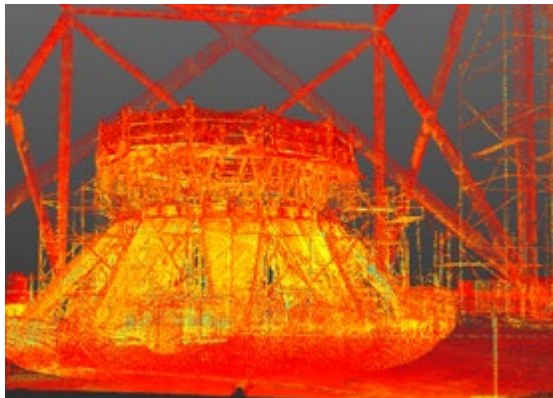
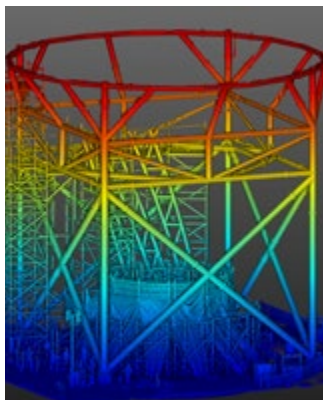
Reality
Capture



Outsourcing
BIM



Lean
Consulting



NAICM AEROPUERTO INTERNACIONAL

Client: **NAICM / Nuevo Aeropuerto de la Ciudad de México**

Location: **Texcoco / State of Mexico**

Point cloud survey of metal structure.

Services



Reality
Capture





HANGAR QET TECH AEROSPACE

Client: **Secretaría de Economía del Gobierno de Sonora**

Contractor: **Lonas Lorenzo**

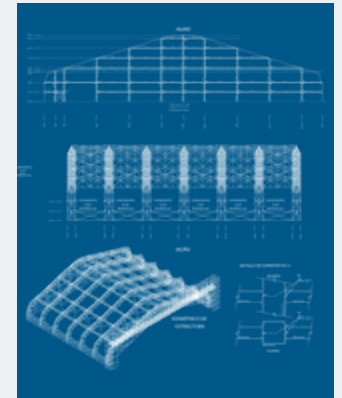
Ciudad **Obregón, Sonora, Mexico | 2013**

Construction of Steel Structure for Maintenance Hangar.

Services



Subcontractor
Metal Structure





SLOPE STABILIZATION SECTOR JUANAMBÚ

Client: **Alcaldía de Cali**

Location: **Cali, Valle del Cauca. Colombia | 2009**

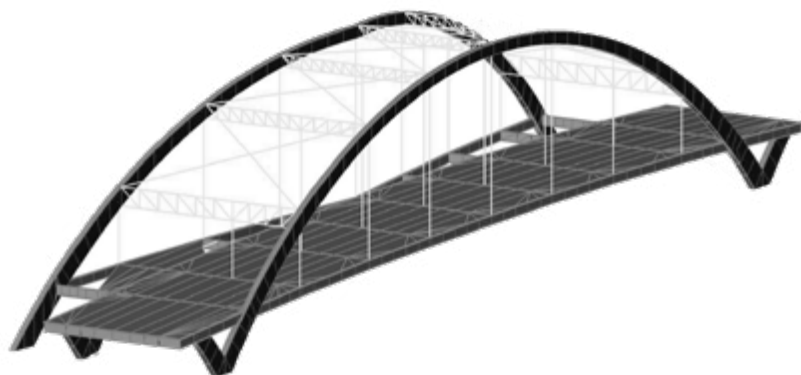
Construction of Slope Stabilization System with Passive Anchoring.

Services



General
Contractor





VEHICULAR BRIDGE SOUTH EASTERN HIGHWAY

Client: **EMRU | Empresa Municipal de Renovación Urbana**
Location: **Cali, Valle del Cauca, Colombia | 2008**

Structural Analysis and Calculation of Vehicular Overpass.

Services



Structural
Design



STOP STATIONS NQS TRUNK LINE | TRANSMILENIO

Client: **Alcaldía de Bogotá**

Contractor: **NQS Sur Section 1 Consortium**

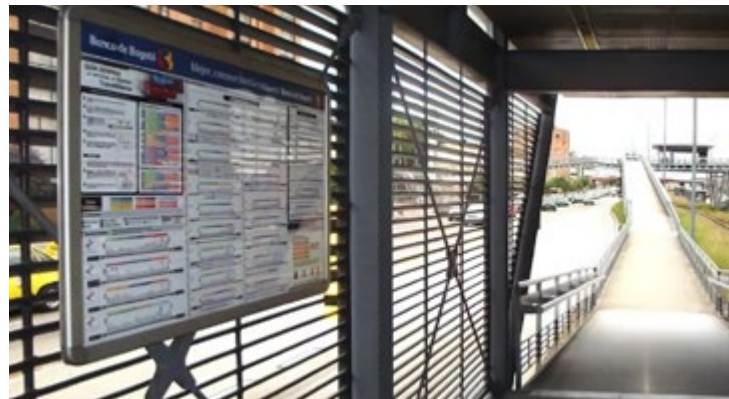
Location: **Bogotá D.C., Colombia | 2004**

Construction of Steel Structures for Bus Rapid Transit System Stop Stations.

Services



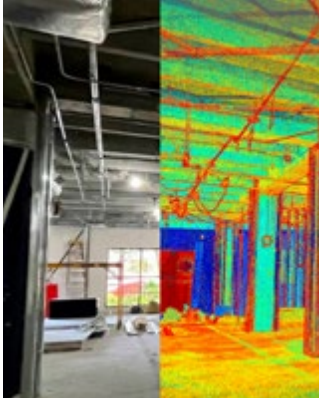
Subcontractor
Steel Structure





**Consulting &
Construction**
Integrated Solutions for the AEC Industry

EDUCATIONAL AND INSTITUTIONAL SECTOR PROJECTS



FLORIDA INTERNATIONAL UNIVERSITY

Client: **FIU | Florida International University**

Location: **Miami, Florida, EE. UU. | 2022**

Point Cloud Survey using Laser Scanner and development of BIM Models of Existing Buildings and Infrastructure.

Services



Reality
Capture



BIM
Outsourcing

TECNOLÓGICO DE MONTERREY - CAMPUS MONTERREY

Client: **ITESM | Tecnológico de Monterrey**

Contractor: **TTQ**

Location: **Monterrey, Nuevo León, Mexico | 2019**

Point Cloud Survey using Laser Scanner and development of BIM Models of Existing Buildings and Infrastructure.

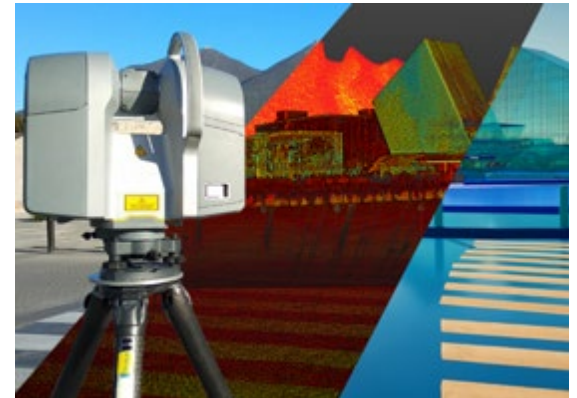
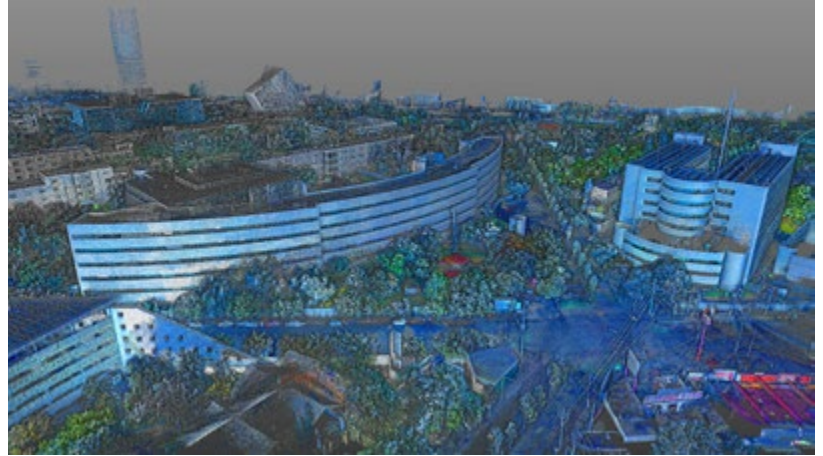
Services

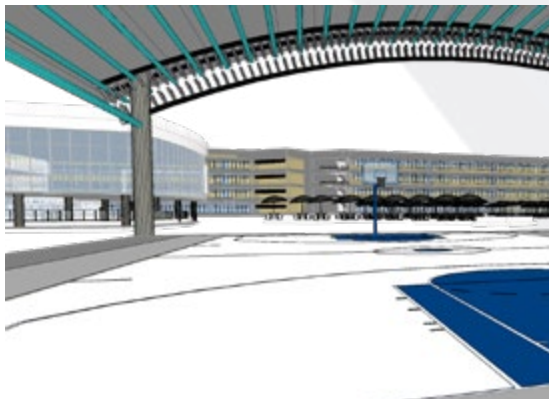


Reality
Capture



BIM
Outsourcing





TECNOLÓGICO DE MONTERREY - CAMPUS GUADALAJARA

Client: **ITESM | Instituto Tecnológico y de Estudios Superiores de Monterrey**

Contractor: **TTQ**

Location: **Guadalajara, Jalisco, Mexico | 2019**

Point Cloud Survey using Laser Scanner and development of BIM Models of Existing Buildings and Infrastructure.

Services



Reality
Capture



BIM
Outsourcing

TECNOLÓGICO DE MONTERREY - CAMPUS SANTA FE

Client: **ITESM | Instituto Tecnológico y de Estudios**

Superiores de Monterrey

Contractor: **TTQ**

Location: **Mexico City, Mexico | 2019**

Point Cloud Survey using Laser Scanning and development of BIM Models of Existing Buildings and Infrastructure.

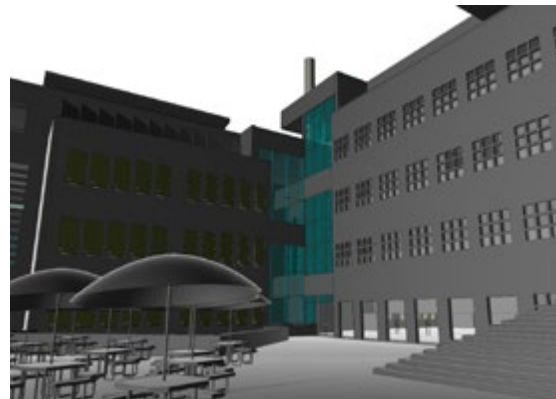
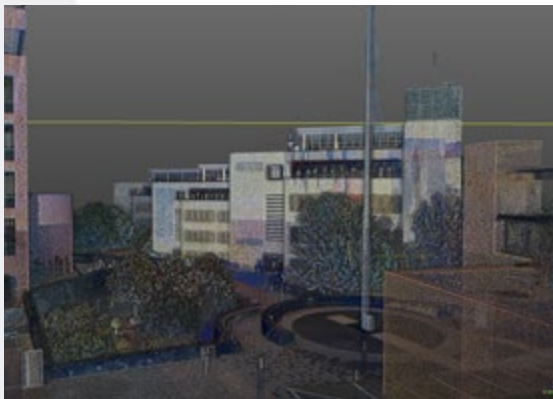
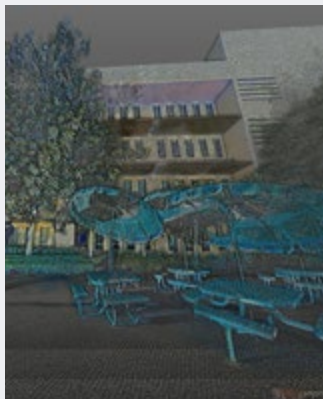
Services

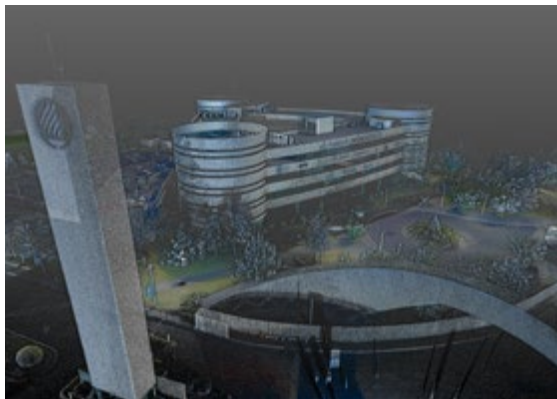


Reality
Capture



BIM
Outsourcing





TECNOLÓGICO DE MONTERREY - CAMPUS PUEBLA

Client: **ITESM | Instituto Tecnológico y de Estudios**

Superiores de Monterrey

Contractor: **TTQ**

Location: **Puebla, Mexico | 2019**

Point Cloud Survey using Laser Scanning and development of BIM Models for Existing Buildings and Infrastructure.

Services



Reality
Capture



BIM
Outsourcing

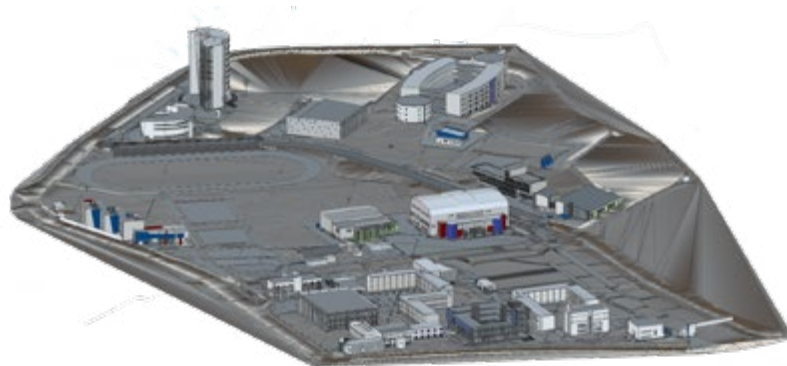
TECNOLÓGICO DE MONTERREY - CAMPUS QUERÉTARO

Client: **ITESM | Instituto Tecnológico y de Estudios Superiores de Monterrey**

Contractor: **TTQ**

Location: **Queretaro, Mexico | 2019**

Point Cloud Survey using Laser Scanning and development of BIM Models for Existing Buildings and Infrastructure.



Services

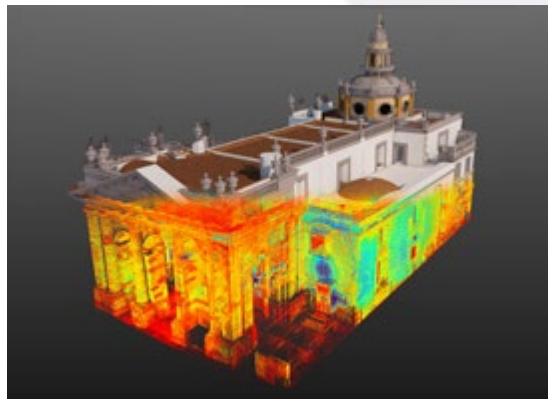


Reality
Capture



BIM
Outsourcing





BIBLIOTECA IBEROAMERICANA OCTAVIO PAZ

Client: **UDG | University of Guadalajara**

Contractor: **Arq. Xavier Massimi**

Location: **Guadalajara, Jalisco, Mexico | 2016**

Point Cloud Survey using Laser Scanning and development of BIM Models for Existing Buildings and

Services



Reality
Capture



BIM
Outsourcing



INSTITUTO DE CIENCIAS DE GOBIERNO Y DESARROLLO ESTRATÉGICO

Client: **Benemérita Universidad Autónoma de Puebla**

Contractor: **Lomas Lorenzo**

Location: **Puebla, Mexico | 2013**

Manufacturing of Steel Structures for façade modules with architectural membrane.

Services



Subcontractor
Steel Structure



CARIÑO EL REMANSO

Client: **Alcaldía de Cali**

Contractor: **EMS Arquitectura**

Location: **Cali, Valle del Cauca, Colombia | 2010**

Structural Analysis and Design for the Integrated Child Care Center.

Services



Structural
Design





CAMPO DE PARADAS

Client: **ECSAN Escuela de Cadetes General Santander – Policía Nacional de Colombia**
Location: **Bogotá D.C., Colombia | 2009**

Design and Construction for the Renovation of Bleachers and Complementary Works at the Parade Ground.

Services



Architectural
Design



Structural
Design



General
Contractor



CIUDADELA EDUCATIVA NUEVO LATIR

Client: **EMRU | Empresa Municipal de Renovación Urbana**

Contractor: **EMRU | Empresa Municipal de Renovación Urbana - Estrumetal**

Location: **Calí, Valle del Cauca, Colombia | 2008**

Structural analysis and design for an educational complex and fabrication of steel structures.

Services



Structural
Design



Steel Structure
Subcontractor





EXPANSION IUAJC

Client: **IUAJC | Instituto Universitario Antonio José Camacho**

Location: **Cali, Valle del Cauca, Colombia | 2008**

Design and Construction of Classroom Buildings and Complementary Works.

Services



Construction
Management



Structural
Design



Steel Structure
Subcontractor



EXPANSION OF UNIVERSIDAD ICESI

Client: **Universidad ICESI**

Contractor: **Perfilamos del Cauca**

Location: **Calí, Valle del Cauca, Colombia | 2004**

Manufacturing of Structural Steel Beams for
Floor Systems.

Services



Subcontractor
Metal Structure





**Consulting &
Construction**
Integrated Solutions for the AEC Industry

HEALTHCARE SECTOR PROJECTS





UNIDAD PINO SUÁREZ

Client: **ISSSTELEON**

Contractor: **Grupo CASS**

Location: **Monterrey, Nuevo León, Mexico | 2019**

Point Cloud Surveying with Laser Scanning and Development of BIM Models for the preparation of the administrative project closure.

Services



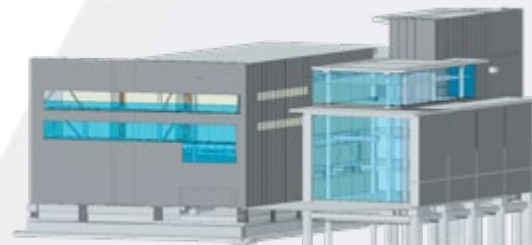
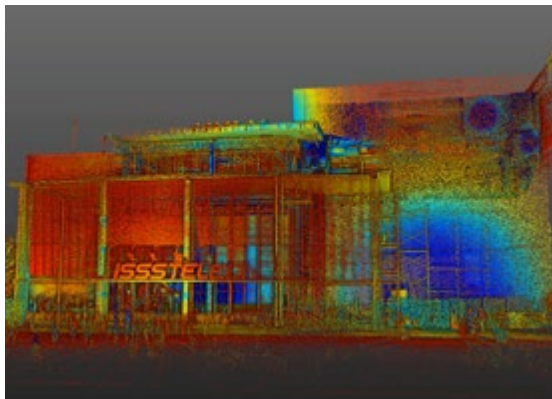
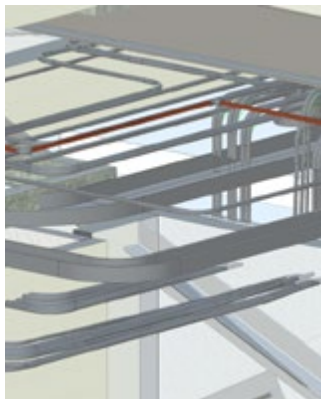
Reality
Capture

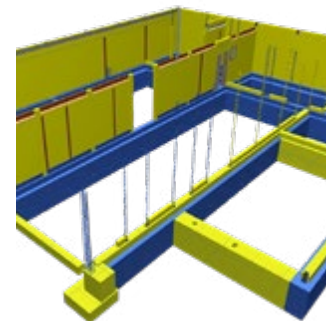
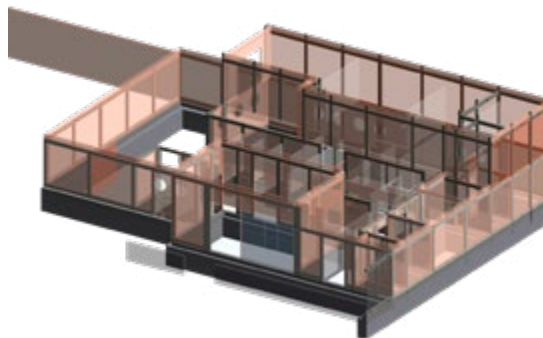
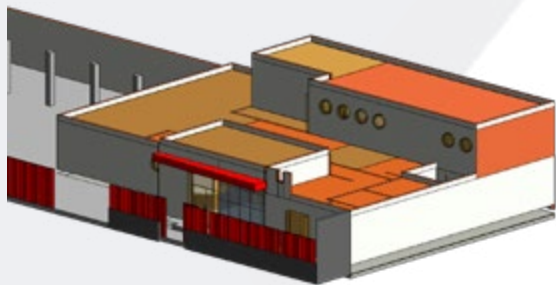


BIM
Outsourcing



Cost
Consulting





HEMODIALYSIS UNIT

Client: **Hospital México Americano**

Location: **Guadalajara, Jalisco, Mexico | 2016 - 2017**

Implementation of Last Planner System and BIM Model for Project Planning and Control.

Services



Lean
Consulting



BIM
Outsourcing



RADA AESTHETIC & SPA CALI

Client: **Clínica Rada**

Location: **Cali, Valle del Cauca, Colombia | 2007**

Structural Design and Construction of Steel Structure
for Specialized Aesthetic Medicine Clinic.

Services



Structural
Design



Subcontractor
Metal Structure





**Consulting &
Construction**
Integrated Solutions for the AEC Industry

SPORTS AND CULTURAL SECTOR PROJECTS





ESTADIO OLÍMPICO PASCUAL GUERRERO

Client: **Alcaldía de Cali**

Contractor: **Fondo Mixto para la Promoción y el Deporte**

Location: **Cali, Valle del Cauca, Colombia | 2009 - 2011**

The project involved the construction of civil works, structural reinforcement, and the comprehensive modernization of the stadium. It included the replanning of enclosure systems, updating of dry and wet networks, and the implementation of high-tech circuits, as well as the installation of a Unified Command Post (UCP) for the operational management of the event.

As part of the intervention, a new architectural membrane roof was built for the north, south, and east stands, with a metal structure fabricated in Mexico and transported to Colombia for assembly. The production of the structure was carried out in three phases: detailed engineering, plant fabrication, and on-site assembly, utilizing over 2,300 tons of steel. Its innovative design with non-conventional shapes presented a significant technical challenge.

Additionally, complementary works were carried out, including the improvement of the electrical system, lighting, audio, security, playing field, seating, and athletic track. All interventions complied with the FIFA standards required for the tournament.

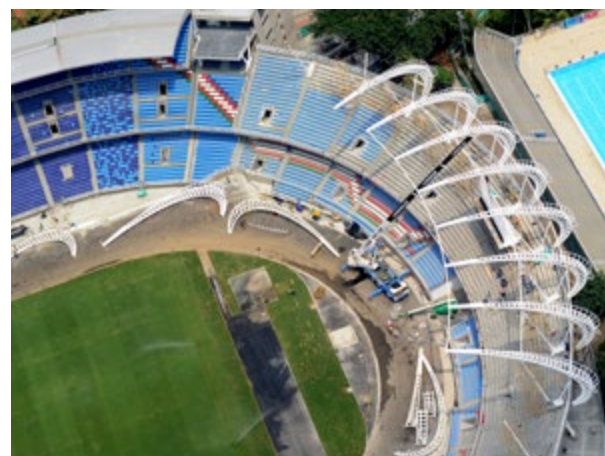
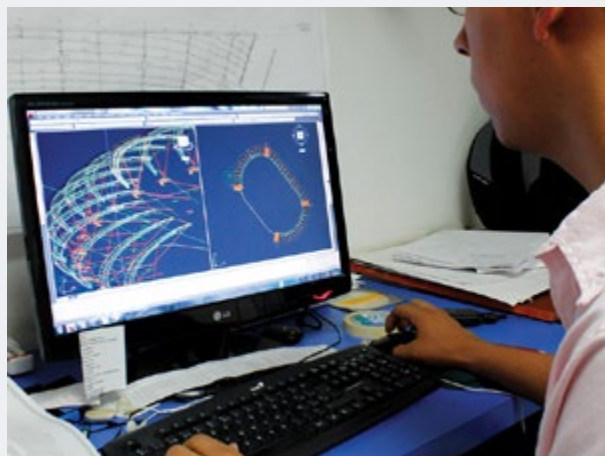
Services

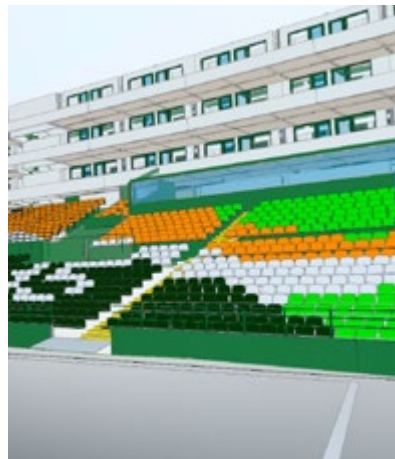
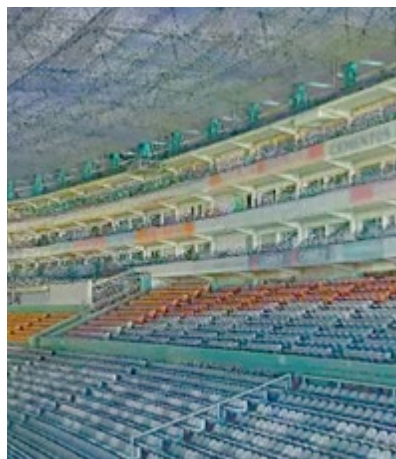
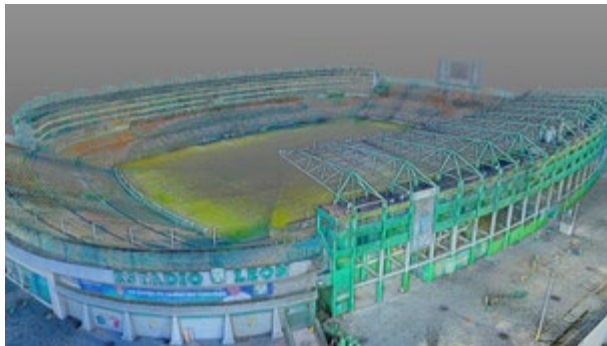


**Project
Management**



**General
Contractor**





NOU CAMP | ESTADIO LEÓN

Client: **Grupo Pachuca**

Contractor: **Manhattan Construction Group**

Location: **León, Guanajuato, Mexico | 2022**

Reality capture was performed using **terrestrial laser scanning** to document the existing conditions of the soccer stadium. This information was complemented with **aerial photography** and the generation of **orthophotos**, providing comprehensive documentation of the facility. Based on this data, detailed **BIM models** were developed, designed to support renovations and remodeling with accurate and up-to-date information.

Services



Digital
Photography



Reality
Capture



BIM
Outsourcing



CLUB SOCIAL Y DEPORTIVO SPGG

Client: **Inmobiliaria Vidusa**

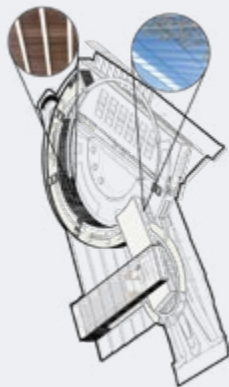
Location: **San Pedro Garza García, Mexico | 2020**

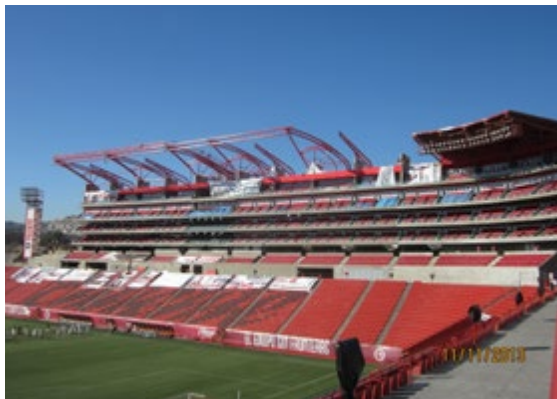
Coordination of Preliminary Studies and Development of Prefeasibility Studies.

Services



Project
Management





ESTADIO CALIENTE

Client: **Club Tijuana Xoloitzcuintles de Caliente**

Contractor: **Lomas Lorenzo**

Location: **Tijuana, Baja California, Mexico | 2013**

Construction of Non-Conventional Steel Structure for Roof with Architectural Membrane (Tensile Structure).

Services



Metal
Structure



PARQUE DEPORTIVO Y CULTURAL PUNTA NORTE

Contractor: **Lomas Lorenzo**

Location: **Ciudad del Carmen, Campeche, Mexico | 2013**

Construction of Non-Conventional Steel Structure for Roofs with Architectural Membrane (Tensile Structure).

Services



Subcontractor
Metal Structure





LA JABONERA

Contractor: **Lonas Lorenzo**

Location: **Torreón, Coahuila, Mexico | 2012**

Construction of Non-Conventional Steel Structure for Roof with Architectural Membrane (Tensile Structure).

Services



Metal
Structure



FSTSE

Client: **FSTSE | Federation of Unions of Workers in Public Service**

Contractor: **Lonas Lorenzo**

Location: **Mexico City, Mexico | 2012**

Construction of Non-Conventional Steel Structures for Roofs with Architectural Membranes (Tensile Structures).

Services



Subcontractor
Metal Structure





**Consulting &
Construction**
Integrated Solutions for the AEC Industry

INDUSTRIAL SECTOR PROJECTS





PLANTA PEROXYCHEM

Client: **PRIME PROCESS ENGINEERING**

Location: **ECATEPEC, MÉXICO**

A detailed survey was conducted at this industrial plant using terrestrial and airborne LiDAR technology to document with high precision the existing conditions of the infrastructure, equipment, and components. This capture enabled the generation of an exact three-dimensional representation of the environment, including hard-to-reach areas and highly complex structures.

The information obtained served as the basis for developing digital models with smart components, which integrate technical attributes such as geometry, materials, identification codes, and functional data. Each component was digitally tagged to facilitate its location, classification, and subsequent assembly, considering that the main objective of the project was the disassembly and transport of the plant from Mexico to Turkey, where it was to be reconstructed with complete fidelity to its original state.

This approach allowed not only precise planning of the dismantling, transportation, and reassembly of the elements but also ensured the traceability and proper placement of each piece at its new location. The combination of high-precision geometric surveying and advanced modeling aligns with current standards for digital asset management in industrial settings, providing efficiency, control, and error reduction in complex logistical processes.

Services



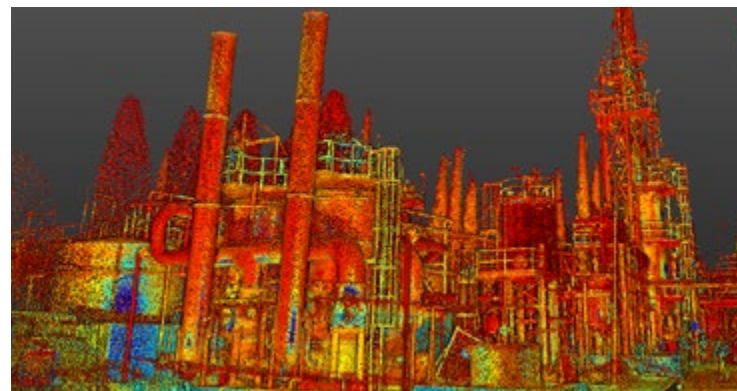
Terrestrial
LiDAR

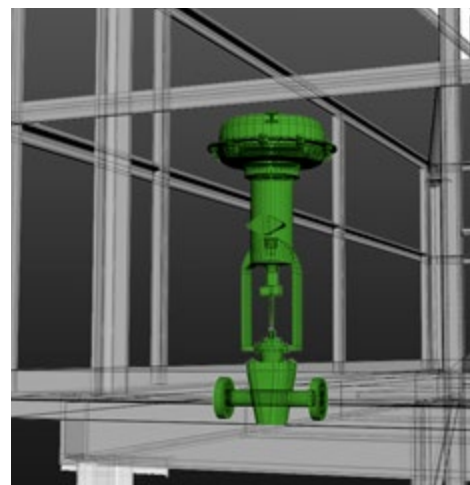
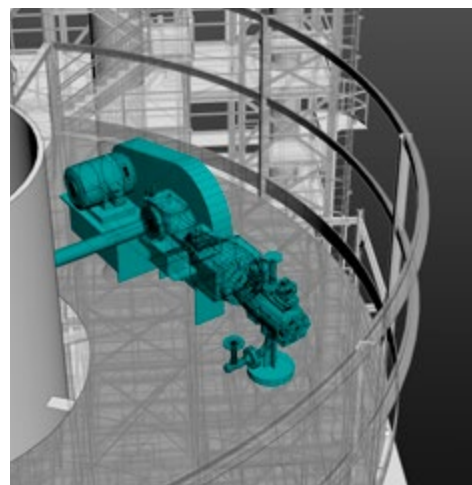
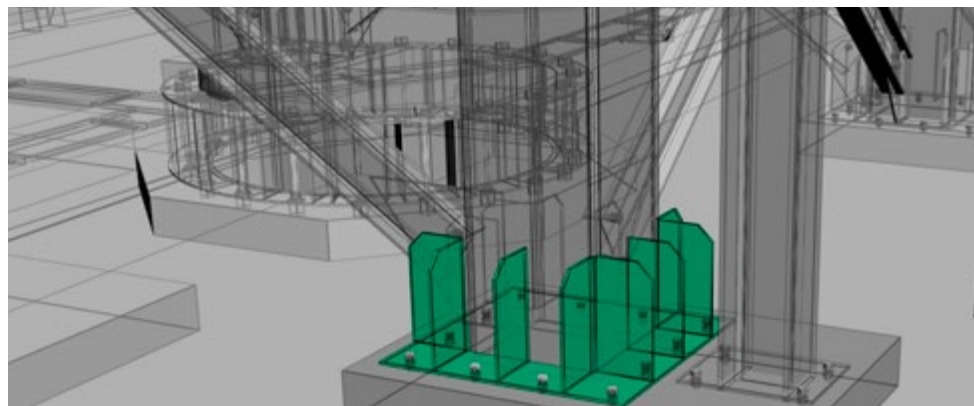


Airborne
LiDAR



BIM







MINA DIA BRAS

Client: **DIA BRAS MEXICANA**

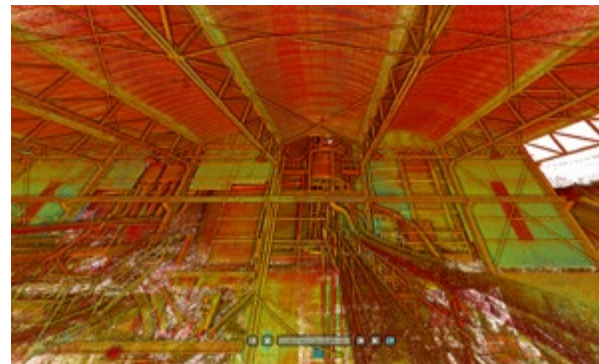
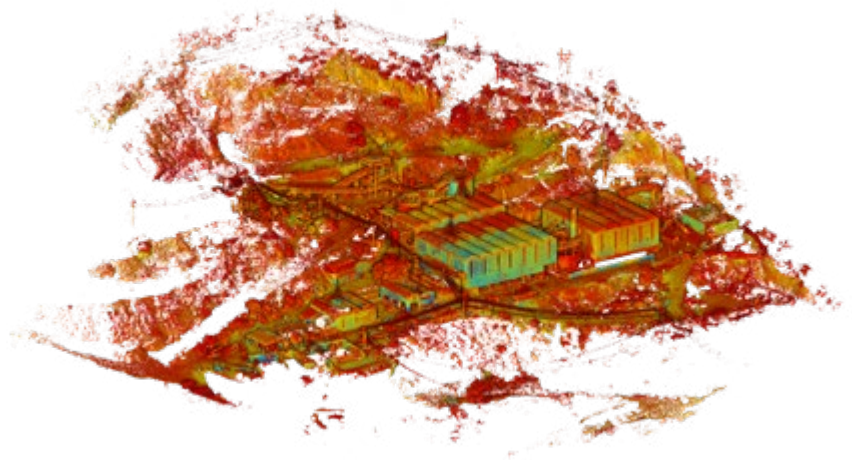
Location: **Chihuahua, Mexico | 2024**

High-precision Laser Scanning complemented with photogrammetric survey and preparation of a topographic plan, providing detailed and accurate documentation of the terrain for optimal project analysis and planning.

Services



Reality
Capture





PLATA DE PRODUCCIÓN FAMESA

Client: **FAMESA**

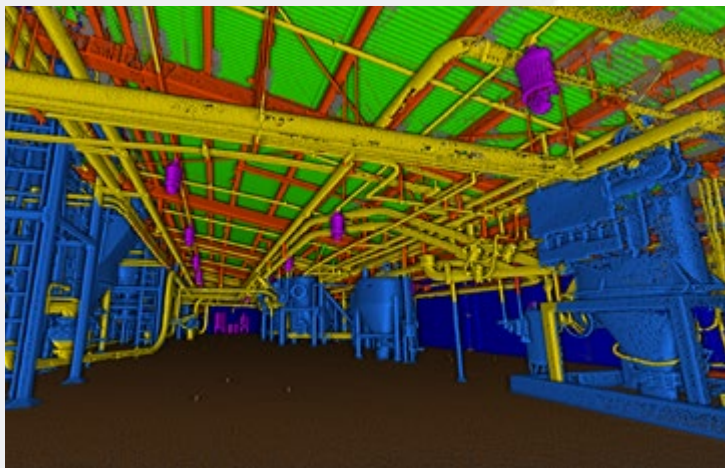
Location: **Jalisco, Mexico | 2022**

Point Cloud Surveying using Laser Scanning for Existing Buildings and Infrastructures.

Services



Reality
Capture



PLANTA INDUSTRIAL MONDELEZ

Client: **MONDELEZ**

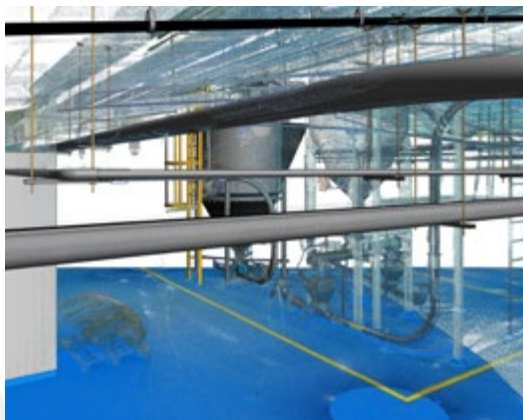
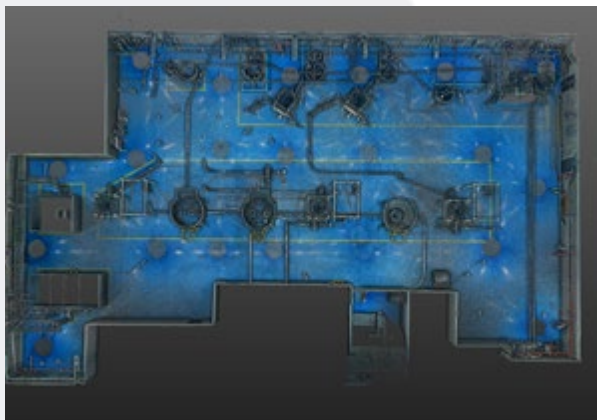
Location: **Monterrey, Mexico | 2018**

Point Cloud Surveying using Laser Scanning for Existing Buildings and Infrastructures.

Services



Reality
Capture





COCA COLA FEMSA

Client: **COCA COLA FEMSA PLANT**

Location: **State of Mexico, Mexico | 2018**

Point Cloud Surveying using Laser Scanning and development of BIM Models for Existing Buildings and Infrastructures.

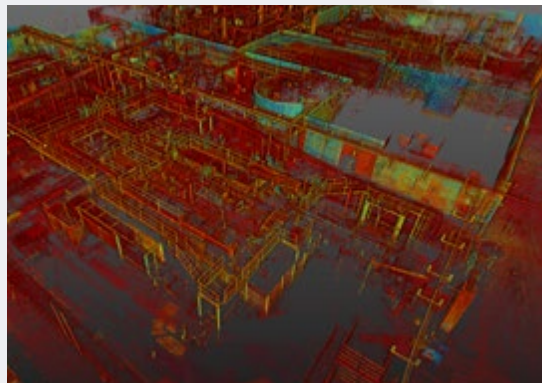
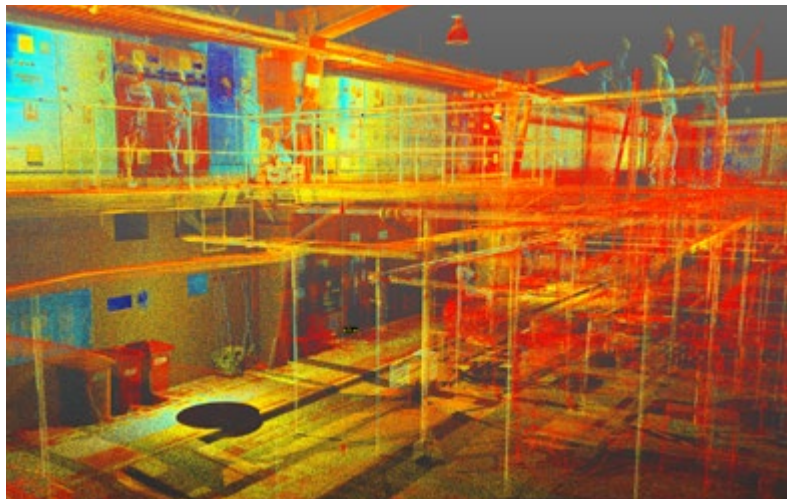
Services

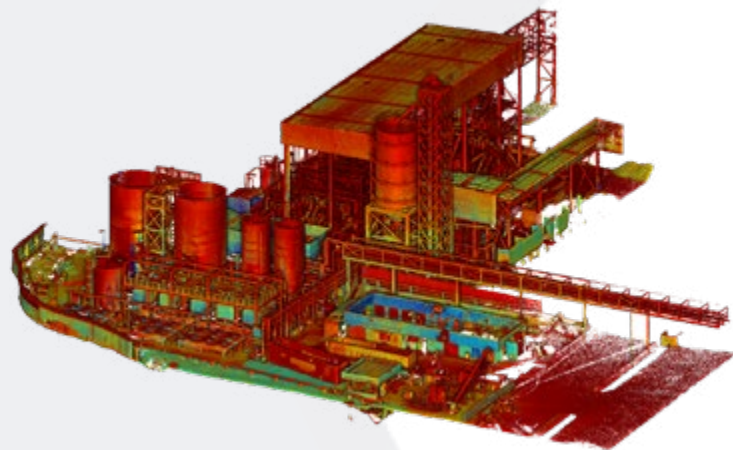


Reality
Capture



BIM
Outsourcing





DIAGEO

TEQUILERA DIAGEO

Client: **R+E Instalaciones**

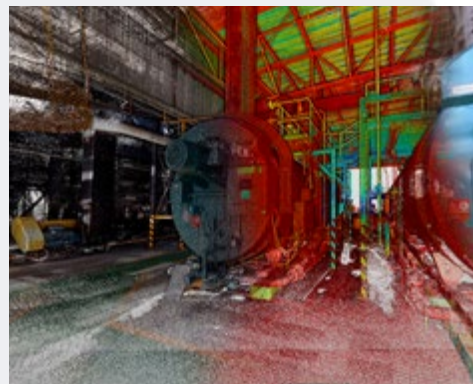
Location: **Atotonilco El Alto, Mexico**

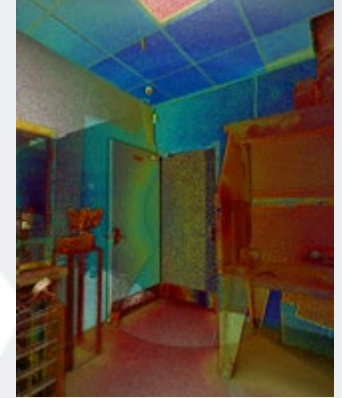
Point Cloud Surveying using Laser Scanning for Existing Buildings and Infrastructures.

Services



Reality
Capture





BODEGAS Y OFICINAS

Client: **Overhaul Accessory Inc.**

Location: **Medley, Florida, USA | 2023**

Reality capture for the generation of As-Built BIM model for renovation.

Services



Reality
Capture

Bovis

DATA CENTER EQUINIX MX2

Client: **Bovis**

Location: **El Marqués, Querétaro, Mexico | 2022 - 2023**

Reality capture for the generation of As-Built BIM model for the expansion of the Equinix MX2 Data Center.

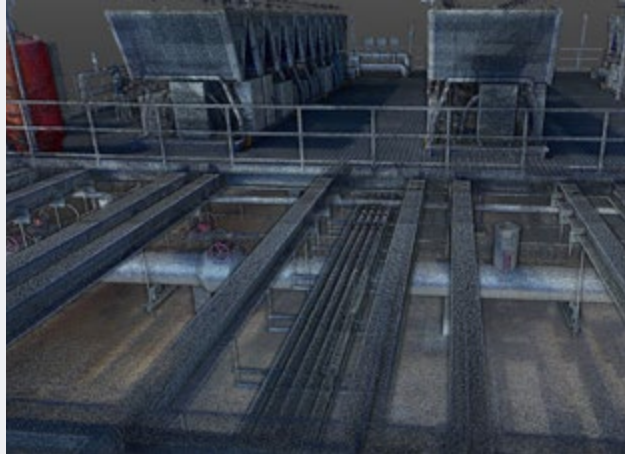
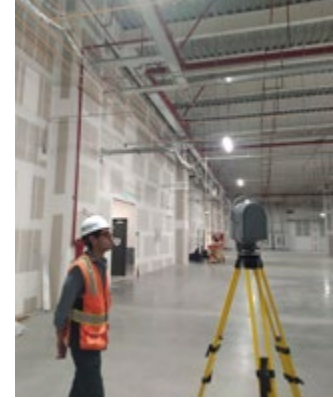
Services

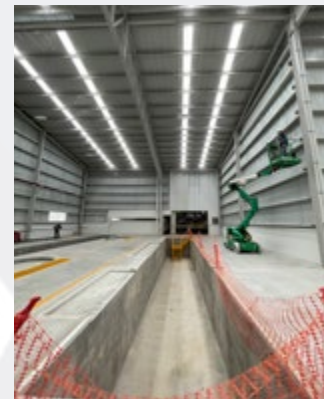


Reality
Capture



BIM
Outsourcing





KOLBENSCHMIDT

AMPLIATION OF KOLBENSCHMIDT PLANT

Client: **Kolbenschmidt de Mexico**

Location: **Ramos Arizpe, Coahuila, Mexico | 2021**

Coordination and Supervision of Construction for the Expansion of the Production Plant.

Services



Project
Management



INDUSTRIAL WAREHOUSE

Client: **Trinity Rail**

Location: **Sabinas, Coahuila, Mexico | 2020**

Development of BIM Models for the preparation of the administrative project closure.

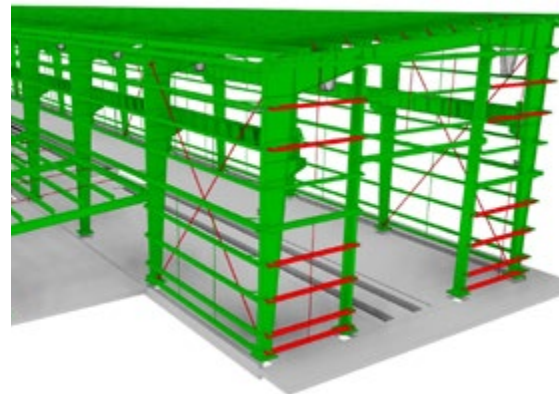
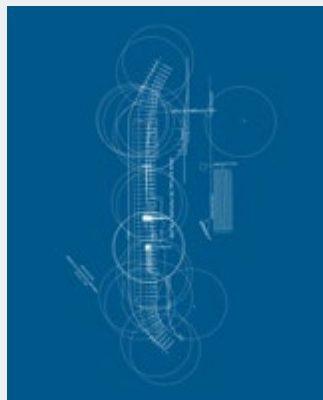
Services

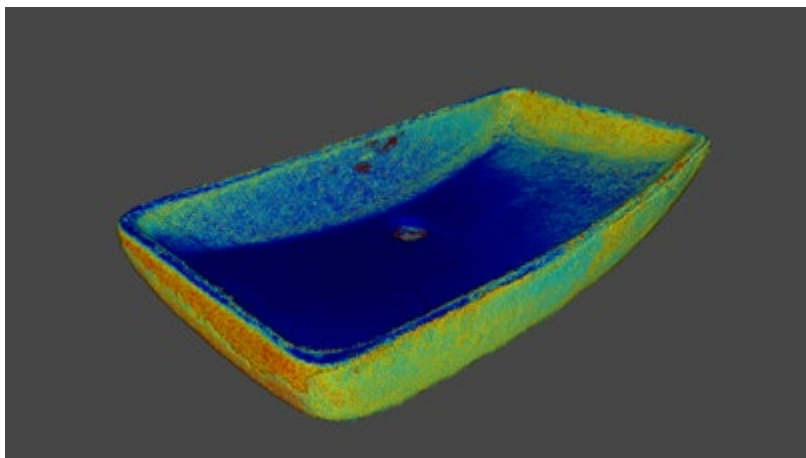
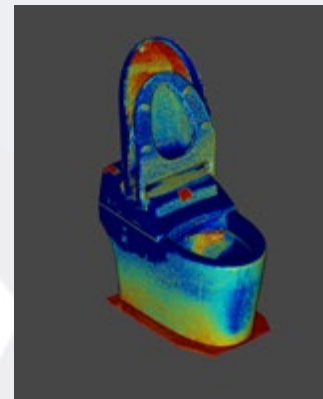
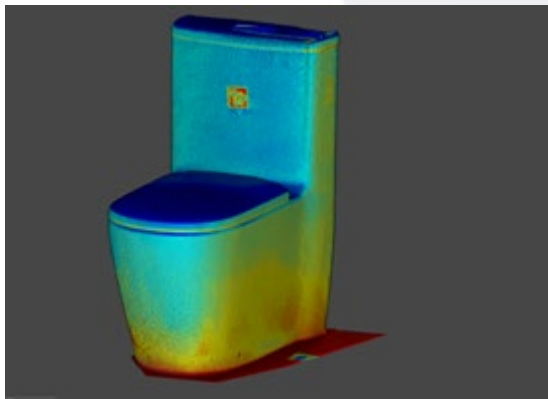
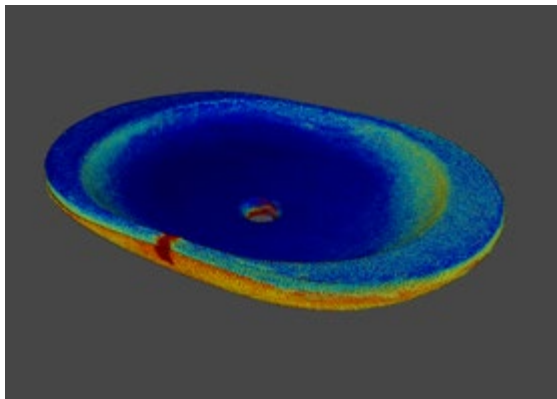


BIM
Outsourcing



Cost
Consulting





REALITY CAPTURE CORONA PRODUCTS

Client: **Porcelana Corona de México**

Locations: **Monterrey, Mexico - Ciudad de Guatemala, Guatemala - Bogotá D.C., Colombia | 2020**

Point Cloud Surveying with Digital Photogrammetry and Development of BIM Models for bathroom porcelain products.

Services



Reality
Capture



BIM
Outsourcing



SUKARNE MONTERREY

Client: **SuKarne**

Location: **Monterrey, Nuevo León, Mexico | 2019**

Point Cloud Surveying using Laser Scanning and Execution of MEP Engineering Designs for Production Plant Adaptation.

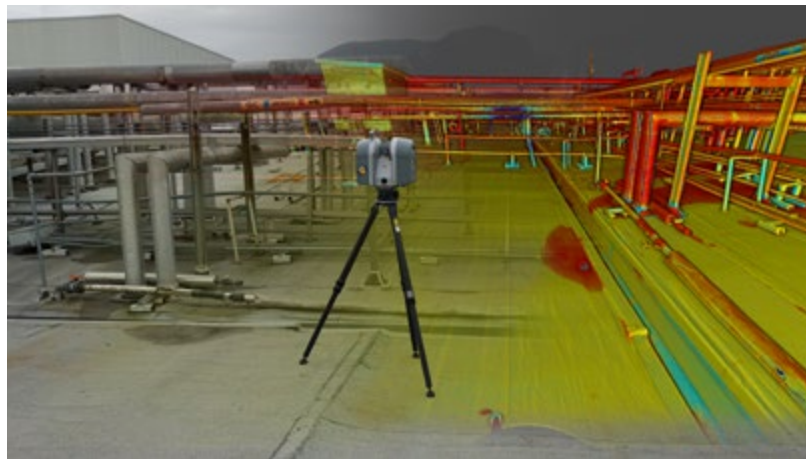
Services



Reality
Capture



MEP Engineering
Design





PLANTA BMW MÉXICO

Client: **BMW**

Contractor: **Copachisa - BMW Mexico**

Location: **San Vicente, San Luis Potosí, Mexico | 2016 - 2019**

Consulting on Lean Processes, particularly for the implementation of Takt Time Planning for Project Planning and Control of Work Processes and Equipment Installation. Coordination of Engineering Designs based on BIM Models.

Services



Lean
Consulting



BIM
Outsourcing



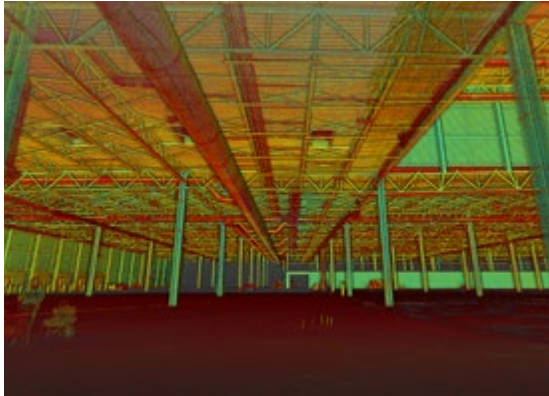
BIM
Coordination

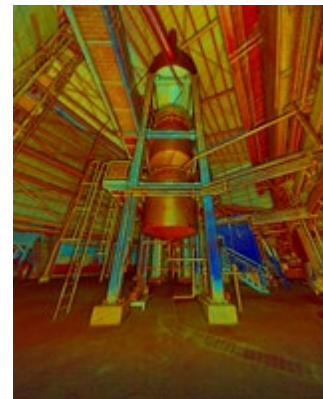
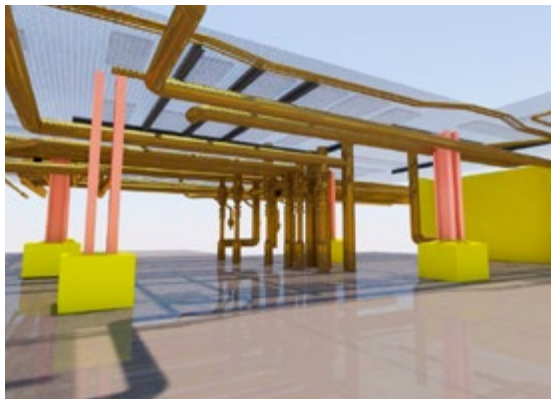
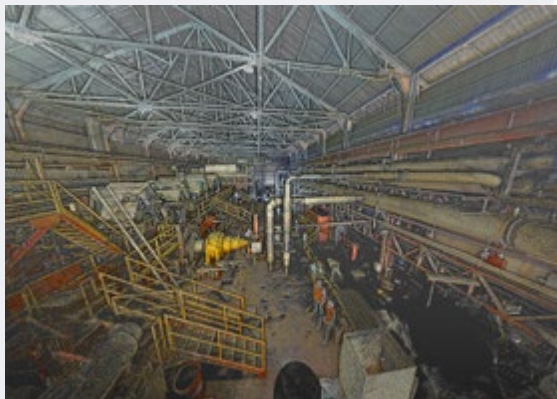


Digital
Photography



Reality
Capture





SUGAR MILL TAMAZULA

Client: **Ingenio Tamazula**

Location: **Tamazula, Guadalajara, Jalisco | 2018**

High-precision point cloud survey of the industrial plant using laser scanning technology, followed by 3D modeling.

Services



Reality
Capture



BIM
Outsourcing



NISSAN PLANT

Client: **Nissan Mexico**

Contractor: **TYP | Terracerías Y Pavimentos Y Asociados**

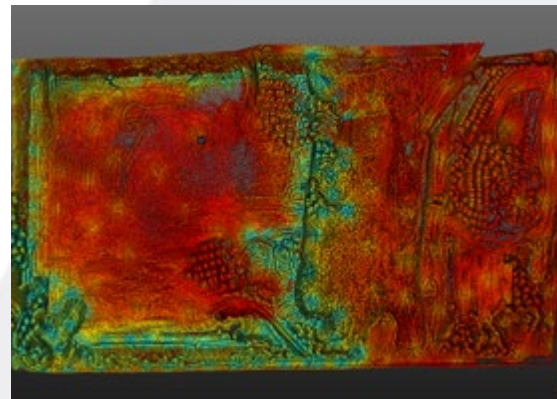
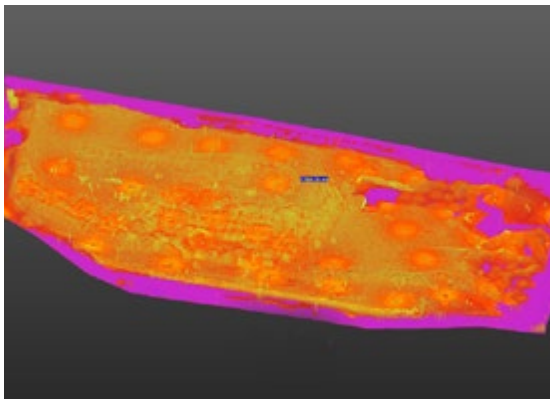
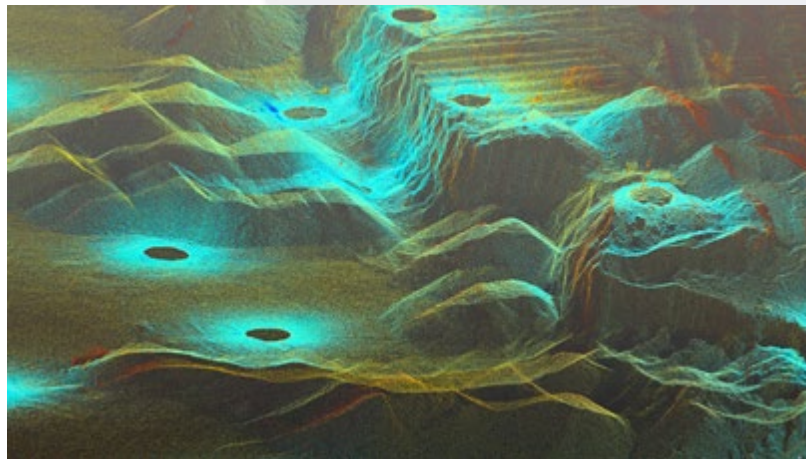
Location: **Aguascalientes, Mexico | 2017**

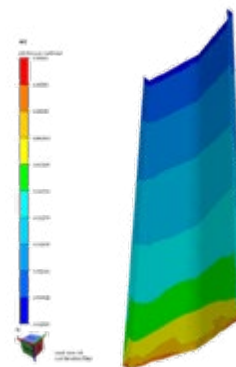
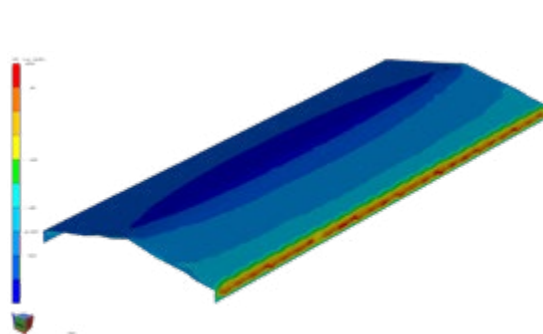
Material Stockpile Surveying with Point Clouds using Laser Scanning.

Services



Reality
Capture





 **TenarisTamsa**

SCRAP YARD

Client: **Tubos de Acero de México**

Location: **Veracruz, Mexico | 2015**

Structural Analysis and Design of Industrial Warehouse for Scrap Yard

Services



Structural
Design



IMPALA WAREHOUSING

Client: **Impala Terminals Mexico**

Contractor: **Corporativo Precolados**

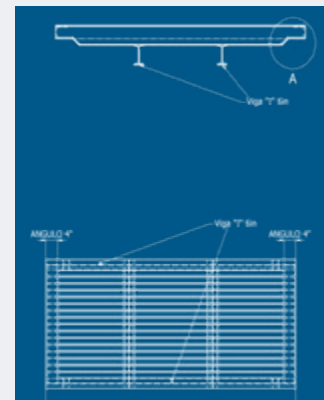
Location: **Manzanillo, Colima, Mexico | 2012**

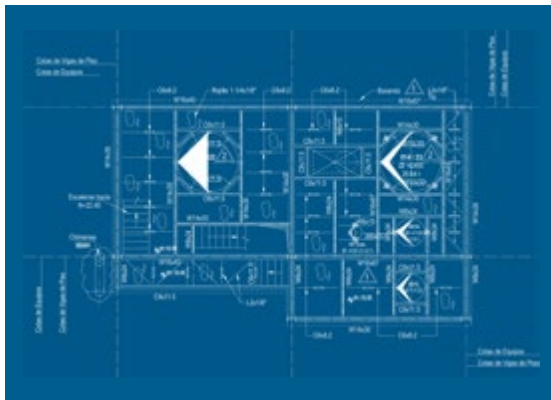
Construction of Steel Structures for Industrial Warehouses and Complementary Works.

Services



Subcontractor
Metal Structure





VEGETABLE OIL REFINERY PLANT

Client: **Teams Food**

Location: **Buga, Colombia | 2012**

Construction of Foundation Work and Steel Structure for the Physical Refining Plant Building of Vegetable Oils.

Services



General
Contractor



BAGACERA PLANT

Client: **Ingenio de Occidente**

Location: **Villa Rica, Colombia | 2012**

Design and Construction of Steel Structure for
Sugarcane Bagasse Processing Plant.

Services



Structural
Design



Subcontractor
Metal Structure





COLOMBINA DEL CAUCA PHASE II

Client: **Colombina**

Contractor: **Construandes**

Location: **Santander de Quilichao, Colombia | 2012**

Construction of Steel Structure for Production Plant Expansion.

Services



Subcontractor
Metal Structure



EXPORT WAREHOUSE

Client: **Eternit del Pacífico**

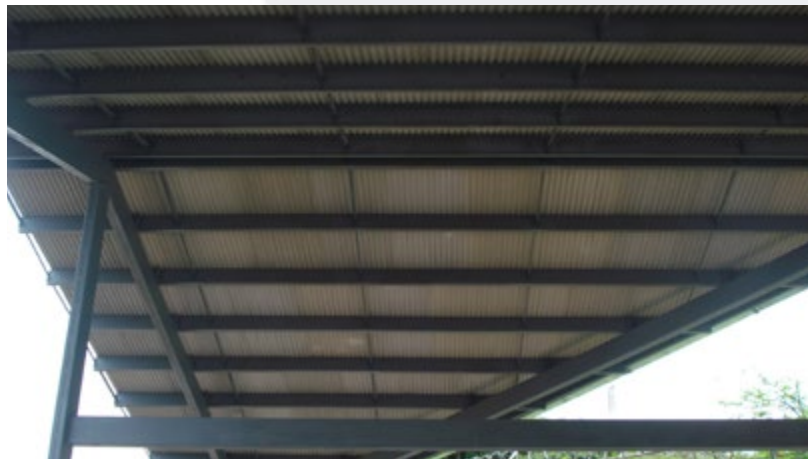
Location: **Yumbo, Colombia | 2008**

Construction of Foundation and Steel Structure for Export Materials Warehouse.

Services



General
Contractor





KILN CHIMNEY

Client: **Argos**

Contractor: **Construmecam**

Location: **Yumbo, Colombia | 2008**

Construction of Steel Chimney for Kiln.

Services



Subcontractor
Metal Structure



CALCIUM CARBONATE PLANT

Client: **Eternit del Pacifico**

Contractor: **Qbiko Arquitectura**

Location: **Yumbo, Colombia | 2007**

Construction of Steel Structure for Industrial Building.

Services



Subcontractor
Metal Structure





PASTAS PASTIFICIO PASTICHELI PLANT

Client: **Pastas V&V**

Location: **Palmira, Colombia | 2006**

Design and Construction of Steel Structure for Food Processing Plant.

Services



Structural
Design



Subcontractor
Metal Structure

INDUSTRIAL INK PLANT

Client: **Industrial de Tintas**

Location: **Yumbo, Colombia | 2005**

Design and Construction of Industrial Plant for Ink Production.

Services



Architectural
Design



Structural
Design



MEP
Engineering
Design



General
Contractor





INDUSTINTAS PLANT

Client: **Industintas**

Location: **Santander de Quilichao, Colombia | 2004**

Design and Construction of Industrial Plant for Ink Production.

Services



Architectural
Design



Structural
Design



MEP
Engineering
Design



General
Contractor



PACKAGING BUILDING

Client: **Sucroal**

Contractor: **Promometal**

Location: **Palmira, Colombia | 2004**

Construction of Industrial Building with Steel Structure and Complementary Works.

Services



Subcontractor
Metal Structure





RUM WAREHOUSE

Client: **Industria de Licores del Valle**

Contractor: **Concreacero**

Location: **Palmira, Colombia | 2003**

Construction of Steel Structure for Rum Production Industrial Plant.

Services



Subcontractor
Metal Structure



**DISCOVER THE VANGUARD
OF THE AEC INDUSTRY**
in our Innovation and
Technology Community.





The International Community of Technology and Innovation for the AEC Industry, a place where various spaces converge with up-to-date content aimed at promoting learning, best practices, and the dissemination of cutting-edge topics within the AEC Industry.

#CITIAEC2018





The CITI AEC Congress aims to be the meeting point for Architects, Engineers, Builders, Developers, and Investors in a space where technology and innovation converge through exhibitions and idea debates, concepts, methodologies, and processes, all in favor of the AEC Industry.

Currently, the event covers topics such as: **Construction 4.0, Smart Cities, Building Information Modeling and Virtual Design and Construction (BIM/VDC), Computer Integrated Manufacturing (CIM), Reality Capture, Extended Reality, Project Management, Facility Management, Sustainability, Construction Materials, and Building Systems.** Our vision for 2025 is to become the largest and most important Technology and Innovation event in all of Ibero-America within the Architecture, Engineering, and Construction Industry.





CITI•AEC Talks is a virtual space for professional development, led by experts in the sector, featuring current topics from the Architecture, Engineering, and Construction Industry.



The **CITI AEC Community** has created **CITI-AEC PILLS**, with informative video capsules that, in 60 seconds, explain in a simple way the How, Why, and What for of various topics of interest in the Architecture, Engineering, and Construction Industry.



CITI AEC Interview offers a space to get to know the leading figures in the AEC Industry in depth, where they share their professional journey and personal experiences from a comprehensive perspective, with anecdotes, challenges, and success stories.



**Consulting &
Construction**

Integral Solutions for AEC Industry



Phone

Guadalajara:
+52 (33) 3640-3179



Offices

Goya 561 C.P 44670 Guadalajara, Jal.
3130 W 84Th St Unit 5 Hialeah, Florida. 33018



Email

info@consulting.construction



Website

<https://consulting.construction/>